

Activity Name	Original Duration	Planned Start	Planned Finish	2011				2012				2013				2014				2015				2016	
				Q3	Q4	Q1	Q2	Q3	Q4	Q1	Q2	Q3	Q4	Q1	Q2	Q3	Q4	Q1	Q2	Q3	Q4	Q1	Q2		
HY/2009/15 - CWB TUNNEL (CBTS SECTION)																									
SUBMISSIONS COMPLYING WITH EPs																									
EM&A Manual (rely on the Master EP's submission EP-364/2009/A Condition 2.9)																									
Baseline Monitoring Report (rely on the Master EP's submission EP-364/2009 Condition 3.3)																									
Monthly EM&A (rely on the masters EP's Submission, EP-364/2009/A Condition 3.4)																									
A dedicated website (rely on the master EP's submission, EP-364/2009/A Condition 4.2)																									
Management organization of main construction companies (FEP Condition 2.6)	1d	02-Oct-10	02-Oct-10																						
Work Schedule (FEP Condition 2.7)	1d	27-Oct-10	27-Oct-10																						
Location Plan (FEP Condition 2.8)	1d	27-Oct-10	27-Oct-10																						
Noise Management plan (FEP Condition 2.9)	1d	27-Oct-10	27-Oct-10																						
Landscape plan (FEP condition 2.10)	1d	31-Jan-11	31-Jan-11																						
EAST VENTILATION ADIT																									
CCT @ Portion 1, 2, 4, 6, 22	1315d	27-Sep-10	03-May-14																						
EV Adit @ Portion 4-Advance Works	526d	27-Sep-10	05-Mar-12																						
EV Adit Portion 1, 2, 6, 22	26d	22-Dec-11	16-Jan-12																						
EV Adit-based on Conforming Design	323d	15-Feb-12	02-Jan-13																						
TCBR1E (TS1 Area)																									
Diaphragm Wall Construction (incl. SI, & tests after completion)	107d	26-Apr-11	10-Aug-11																						
Excavation & Lateral Support, ELS	99d	16-Jul-11	22-Oct-11																						
Cut & Cover Tunnel Construction (incl. backfill)	78d	22-Oct-11	07-Jan-12																						
OHVD and Cable Trough (access from Portion 22)	76d	18-Dec-13	03-Mar-14																						
TCBR2 + TCBR3 (TS2 Area)																									
Diaphragm Wall Construction	118d	06-Jul-12	31-Oct-12																						
Excavation & Lateral Support, ELS	248d	06-Jul-12	10-Mar-13																						
Cut & Cover Tunnel Construction	164d	11-Mar-13	21-Aug-13																						
OHVD Cable Trough (Access from Portion 22)	150d	05-Aug-13	01-Jan-14																						
TCBR1W (TS4 Area)																									
Diaphragm Wall Construction	148d	28-Jun-11	22-Nov-11																						
Excavation & Lateral Support, ELS	319d	26-Jun-11	11-May-12																						
Landing Steps - Demolition/Reconstruct as footpath	40d	28-Jun-11	23-Aug-11																						

- ◆ Milestone
- ◆ Milestone
- ▬ Remaining Work
- ▬ Critical Remaining Work
- ▬ Actual Work

1 of 2

China State Construction Engineering (Hong Kong) Ltd.

Contract No. HY/2009/15 - Central Wan Chai By Pass - Tunnel

(CBTS Section)

Prepared by William Caluza			
Date	Revision	Checked	Approved
14-Mar-11	Revision C	ST	KL
	File: GC01a		
	(Layout:HY/2009/15: CWB - Summary)		

中國建築工程(香港)有限公司

CHINA STATE CONSTRUCTION ENGINEERING (HONG KONG) LTD

Data Date: 20-Nov-12
 Print Date: 21-Nov-12

HY/2009/18 Central - Wan Chai Bypass (Central Interchange)

TASK filters: 3 Months, Not HL.



Activity ID	Activity Name	Original Duration	Start	Finish	Total Float	2012				2013																						
						Nov		Dec		Jan		Feb																				
						1	2	1	2	1	2	1	2																			
Update 2012-11-20 CWB - Central Interchange (2012-08-31) Revised DWP R3																																
PRELIMINARIES																																
Access Dates & Milestones																																
Portion Possession Dates																																
1304	Portion VI Available (DAY-783)	0	12-Nov-12 A																													
Submissions & Approvals																																
Traffic																																
Temporary Traffic Management																																
1788	TTM - Engineer / 21th TMLG Review & Approve	19	18-Oct-12 A	07-Nov-12 A																												
1789	TTM - Revise & Resubmit	18	08-Nov-12 A	07-Dec-12	272																											
Design																																
Cost Saving Design (Contractor's Alternative Design)																																
1779	BP - Revised Pre-bored H Pile Scheme Design Engineer Review & Approval	28	11-Sep-12 A	21-Nov-12	334																											
1782	BP - Pre-bored H Pile Design for Elevated Layby Engineer Review & Approval	28	15-Sep-12 A	21-Nov-12	839																											
Temporary Works Design																																
Bridge / Viaduct Temporary Works																																
3690	Bridge/Viaduct - Scaffolding Design Engineer Review & Comment	28	16-Jun-12 A	22-Nov-12	439																											

◆ Current Milestone ■ Critical Remaining Work
 — Level of Effort □ Remaining Work
 ▲ Baseline Milestone — Project Baseline
 ■ Actual Work

Leighton Contractors (Asia) Limited Programme Update 26 (Nov 2012) THREE MONTH ROLLING

Project ID: U026
 Baseline: DCP4-4
 Layout: Update Three Month Rolling U026
 Page 1 of 12

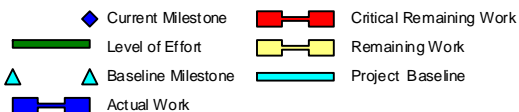
U025 Programme Update 26 (Nov 2012)			
Date	Revision	Checked	Approv...
21-Nov-12	U026	EC	RW
21-Oct-12	U025	RC	RW

HY/2009/18 Central - Wan Chai Bypass (Central Interchange)



TASK filters: 3 Months, Not HL.

Activity ID	Activity Name	Original Duration	Start	Finish	Total Float	2012				2013	
						Nov		Dec		Jan	Feb
						1	2	1	2	1	2
3692	Bridge/Viaduct - Revise & Resubmit Scaffolding Design	14	23-Nov-12	06-Dec-12	439						
3694	Bridge/Viaduct - Engineer Review & Approve Scaffolding Design	28	07-Dec-12	03-Jan-13	439						
Utilities Support Bridge (Man Yiu Street)											
1647	USB - Cooling Water Main Bridge Engineer Review & Approval	28	17-Oct-12 A	04-Dec-12	26						
ELS - CWB / Ventilation Building Portion (CH1480 - CH1580)											
1191	ELS - ELS CWB / Ventilation Building Re-Submission	14	17-Apr-12 A	24-Nov-12	16						
1192	ELS - ELS CWB / Ventilation Building Engineer Review & Approval	14	25-Nov-12	08-Dec-12	16						
ELS - CWB Man Yiu Street Portion & Tunnel Modification Works (CH1646 - CH1685)											
1593	ELS - ELS CWB Man Yiu Street Portion Method Statement Resubmission	28	14-Mar-12 A	28-Nov-12	20						
1693	ELS - ELS CWB Man Yiu Street Portion Design Resubmission	15	20-Jul-12 A	24-Nov-12	24						
1694	ELS - ELS CWB Man Yiu Street Portion Engineer Review & Approve	21	25-Nov-12	15-Dec-12	24						
1595	ELS - ELS CWB Man Yiu Street Portion Method Statement Engineer Review & Approve	21	29-Nov-12	19-Dec-12	20						
ELS - CWB Cut & Cover Portion (CH1580 - CH1646)											
1776	ELS - ELS CWB CH1580-CH1646 Portion Re-submit Design	15	14-Sep-12 A	04-Dec-12	41						
1777	ELS - ELS CWB CH1580-CH1646 Portion Re-submit Design Engineer Review & Comment	12	05-Dec-12	16-Dec-12	41						
ELS - CWB CRIII Portion (CH1685 - CH1704)											
1695	ELS - ELS CRIII Portion Resubmit Design	28	20-Jul-12 A	12-Nov-12 A							



Leighton Contractors (Asia) Limited Programme Update 26 (Nov 2012) THREE MONTH ROLLING

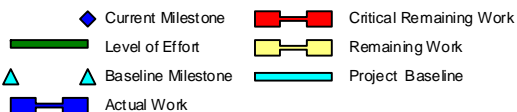
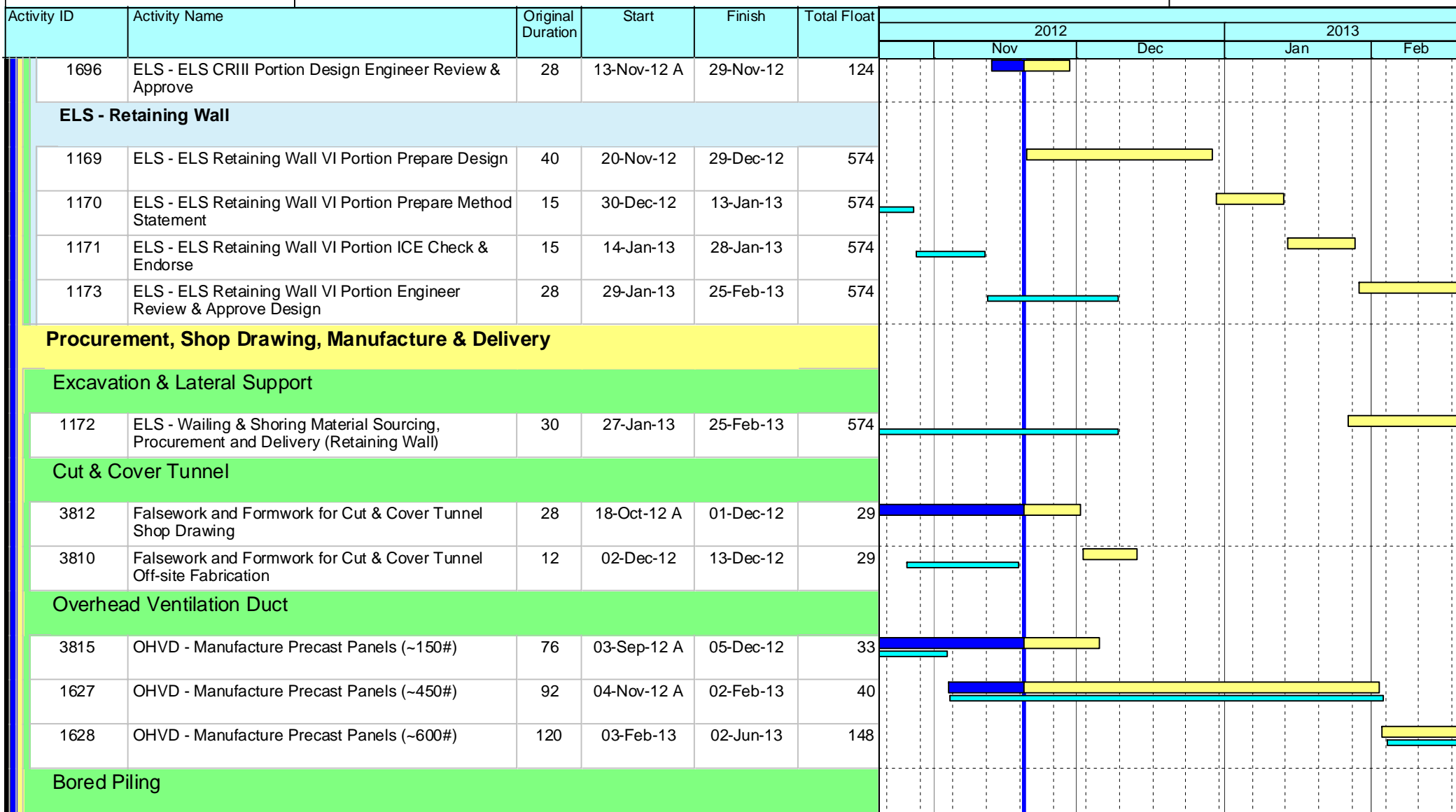
Project ID: U026
Baseline: DCP4-4
Layout: Update Three Month Rolling U026
Page 2 of 12

U025 Programme Update 26 (Nov 2012)			
Date	Revision	Checked	Approv...
21-Nov-12	U026	EC	RW
21-Oct-12	U025	RC	RW

HY/2009/18 Central - Wan Chai Bypass (Central Interchange)



TASK filters: 3 Months, Not HL.



Leighton Contractors (Asia) Limited Programme Update 26 (Nov 2012) THREE MONTH ROLLING

Project ID: U026
 Baseline: DCP4-4
 Layout: Update Three Month Rolling U026
 Page 3 of 12

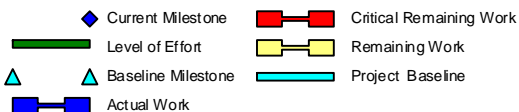
U025 Programme Update 26 (Nov 2012)			
Date	Revision	Checked	Approv..
21-Nov-12	U026	EC	RW
21-Oct-12	U025	RC	RW

HY/2009/18 Central - Wan Chai Bypass (Central Interchange)



TASK filters: 3 Months, Not HL.

Activity ID	Activity Name	Original Duration	Start	Finish	Total Float	2012					2013	
						Nov		Dec		Jan	Feb	
						Actual	Remaining	Actual	Remaining	Actual	Remaining	
1790	BP - Re-Submit Pre-bored H Pile Method Statement	12	17-Oct-12 A	05-Nov-12 A		█						
3825	BP - Initial Mobilisation & Procurement (Pre-bored H Pile)	12	18-Oct-12 A	14-Nov-12 A		█						
1791	BP - Pre-bored H Pile Method Statement Engineer Review & Approval	28	02-Nov-12 A	14-Nov-12 A		█						
1772	BP - Tender / Award Pre-bored Pile Subcontract for Layby	30	22-Dec-12	20-Jan-13	656				█	█		
1773	BP - Prepare & Submit Pre-bored H Pile Method Statement for Layby	28	21-Jan-13	17-Feb-13	656					█	█	
1775	BP - Pre-bored H Pile Method Statement Engineer Review & Approval	28	18-Feb-13	17-Mar-13	656							█
Post-tensioning												
3830	PT - Tender / Award Bridge Post-tensioning Subcontract	60	08-Nov-12 A	08-Jan-13	327		█	█	█	█		
3835	PT - Initial Mobilisation & Procurement	45	09-Jan-13	22-Feb-13	327					█	█	█
1137	PT - Prepare & Submit Post-tensioning Method Statement	15	11-Jan-13	25-Jan-13	327					█	█	
1141	PT - Post-tensioning Method Statement Engineer Review & Approval	28	26-Jan-13	22-Feb-13	327						█	█
Bridge Bearings												
1795	BEAR - Engineer Review & Approve Design & Particulars of Bearings	30	19-Oct-12 A	28-Nov-12	383	█	█					
3845	BEAR - Procure & Fabricate Bridge Bearings	30	25-Dec-12	23-Jan-13	327				█	█		
1142	BEAR - Prepare & Submit Bearing & Plinth Method Statement	15	11-Jan-13	25-Jan-13	327					█	█	
3846	BEAR - Delivery of Bearings	30	24-Jan-13	22-Feb-13	327						█	█
1143	BEAR - Bearing & Plinth Method Statement Engineer Review & Approval	28	26-Jan-13	22-Feb-13	327						█	█



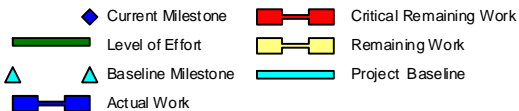
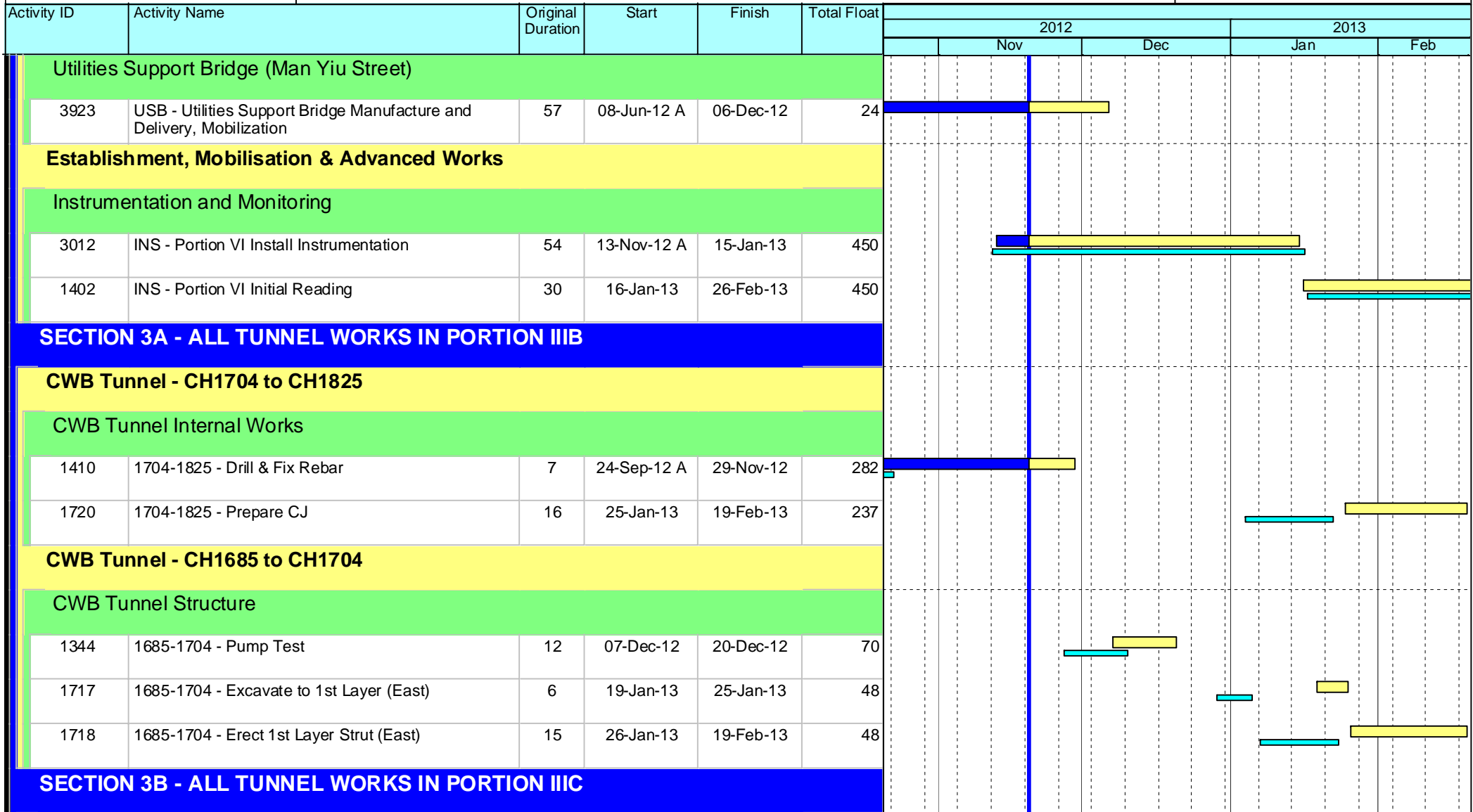
Leighton Contractors (Asia) Limited Programme Update 26 (Nov 2012) THREE MONTH ROLLING

Project ID: U026
 Baseline: DCP4-4
 Layout: Update Three Month Rolling U026
 Page 4 of 12

U025 Programme Update 26 (Nov 2012)			
Date	Revision	Checked	Approv..
21-Nov-12	U026	EC	RW
21-Oct-12	U025	RC	RW

HY/2009/18 Central - Wan Chai Bypass (Central Interchange)

TASK filters: 3 Months, Not HL.



Leighton Contractors (Asia) Limited Programme Update 26 (Nov 2012) THREE MONTH ROLLING

Project ID: U026
Baseline: DCP4-4
Layout: Update Three Month Rolling U026
Page 5 of 12

U025 Programme Update 26 (Nov 2012)			
Date	Revision	Checked	Approv...
21-Nov-12	U026	EC	RW
21-Oct-12	U025	RC	RW

Data Date: 20-Nov-12
 Print Date: 21-Nov-12

HY/2009/18 Central - Wan Chai Bypass (Central Interchange)



TASK filters: 3 Months, Not HL.

Activity ID	Activity Name	Original Duration	Start	Finish	Total Float	2012				2013	
						Nov		Dec		Jan	Feb
						Actual	Remaining	Actual	Remaining	Actual	Remaining
CWB Tunnel - CH1825 to CH2600											
CWB Tunnel Internal Works											
1380	1825-2600 - Prepare CJ Ch2600 - 2300	40	07-Sep-12 A	05-Dec-12	25						
1744	1825-2600 - Prepare CJ Ch2300 - 2000	40	03-Nov-12 A	24-Dec-12	237						
1390	1825-2600 - Erect Precast Slab & Stitching & Construct Kicker Ch2600 - 2300	69	06-Dec-12	06-Mar-13	25						
1746	1825-2600 - Prepare CJ Ch2000 - 1825	24	27-Dec-12	24-Jan-13	237						
1750	1825-2600 - Construct Roadside Barriers and Service Ducts (3m/d)	258	31-Jan-13	17-Dec-13	25						
SECTION 4B - ALL TUNNEL WORKS IN PORTION IVC, IVD, IVE & IVF											
CWB Tunnel - CH1480 to CH1580											
CWB Tunnel Structure											
1684	1480-1580 - Erect 4th Layer Strut (West)	11	19-Oct-12 A	02-Nov-12 A							
1686	1480-1580 - Excavate 4th Layer (East)	7	19-Oct-12 A	31-Oct-12 A							
1685	1480-1580 - Erect 4th Layer Strut (East)	12	02-Nov-12 A	15-Nov-12 A							
1687	1480-1580 - Excavate to Formation Layer	12	07-Nov-12 A	27-Nov-12	6						
1703	1480-1580 - Construct Vent Build Sump Pit Base Slab including Waterproofing	14	28-Nov-12	13-Dec-12	9						
1519	1480-1580 - Construct Vent Build Base Slab including Waterproofing (Bay 2)	30	28-Nov-12	04-Jan-13	6						
1522	1480-1580 - Construct Vent Build Base Slab including Waterproofing (Bay 4)	30	01-Dec-12	08-Jan-13	16						

- Current Milestone
- Critical Remaining Work
- Level of Effort
- Remaining Work
- Baseline Milestone
- Project Baseline
- Actual Work

Leighton Contractors (Asia) Limited Programme Update 26 (Nov 2012) THREE MONTH ROLLING

Project ID: U026
 Baseline: DCP4-4
 Layout: Update Three Month Rolling U026
 Page 6 of 12

U025 Programme Update 26 (Nov 2012)			
Date	Revision	Checked	Approv..
21-Nov-12	U026	EC	RW
21-Oct-12	U025	RC	RW

HY/2009/18 Central - Wan Chai Bypass (Central Interchange)



TASK filters: 3 Months, Not HL.

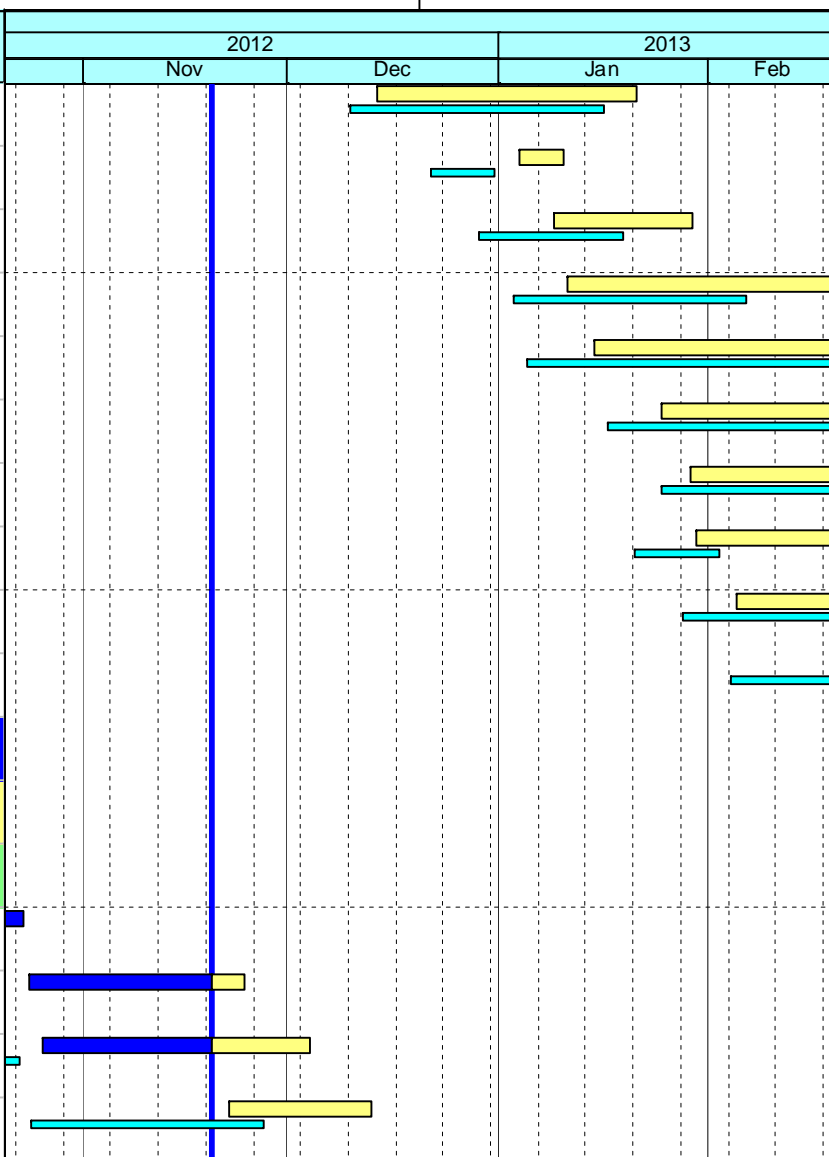
Activity ID	Activity Name	Original Duration	Start	Finish	Total Float	2012				2013								
						Nov		Dec		Jan		Feb						
						Start	End	Start	End	Start	End	Start	End					
1274	1480-1580 - Construct Vent Build Base Slab including Waterproofing (Bay 3)	30	14-Dec-12	21-Jan-13	9													
1747	1480-1580 - Erect Struct S3A & Remove the Soil Berm	6	04-Jan-13	10-Jan-13	6													
1526	1480-1580 - Construct Vent Build Basement Outer Wall (1535)	18	09-Jan-13	29-Jan-13	22													
1523	1480-1580 - Construct Vent Build Base Slab including Waterproofing (Bay 1)	30	11-Jan-13	21-Feb-13	6													
1585	1480-1580 - Construct Vent Build Basement Bearing Wall	39	15-Jan-13	07-Mar-13	14													
1748	1480-1580 - Dismantle of Basement Struts (Layer 3 & 4)	30	25-Jan-13	07-Mar-13	14													
1610	1480-1580 - Construct Vent Build Tunnel Base Slab including Waterproofing (Bay 6)	30	29-Jan-13	12-Mar-13	11													
1594	1480-1580 - Backfill for Tunnel (Bay 4 & 5)	12	30-Jan-13	19-Feb-13	22													
1527	1480-1580 - Construct Vent Build Basement Internal Wall	18	05-Feb-13	04-Mar-13	6													
1580	1480-1580 - Construct Vent Build Mezzanine Floor Slab	23	19-Feb-13	16-Mar-13	6													

SECTION 4A - ALL TUNNEL WORKS IN PORTION IVA, IVB, IVG & IVH

CWB Tunnel - CH1580 to CH1646

CWB Tunnel Structure

11301	1580-1646 - Excavate 1st Layer (West)	4	21-Sep-12 A	23-Oct-12 A	
1704	1580-1646 - Erect 1st Layer Strut (West)	21	24-Oct-12 A	24-Nov-12	7
11302	1580-1646 - Excavate 2nd Layer (West)	14	26-Oct-12 A	04-Dec-12	5
11303	1580-1646 - Erect 2nd Layer Strut (West)	18	22-Nov-12	13-Dec-12	5



- ◆ Current Milestone
- Critical Remaining Work
- Level of Effort
- Remaining Work
- ▲ Baseline Milestone
- Project Baseline
- Actual Work

Leighton Contractors (Asia) Limited Programme Update 26 (Nov 2012) THREE MONTH ROLLING

Project ID: U026
 Baseline: DCP4-4
 Layout: Update Three Month Rolling U026
 Page 7 of 12

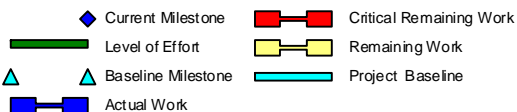
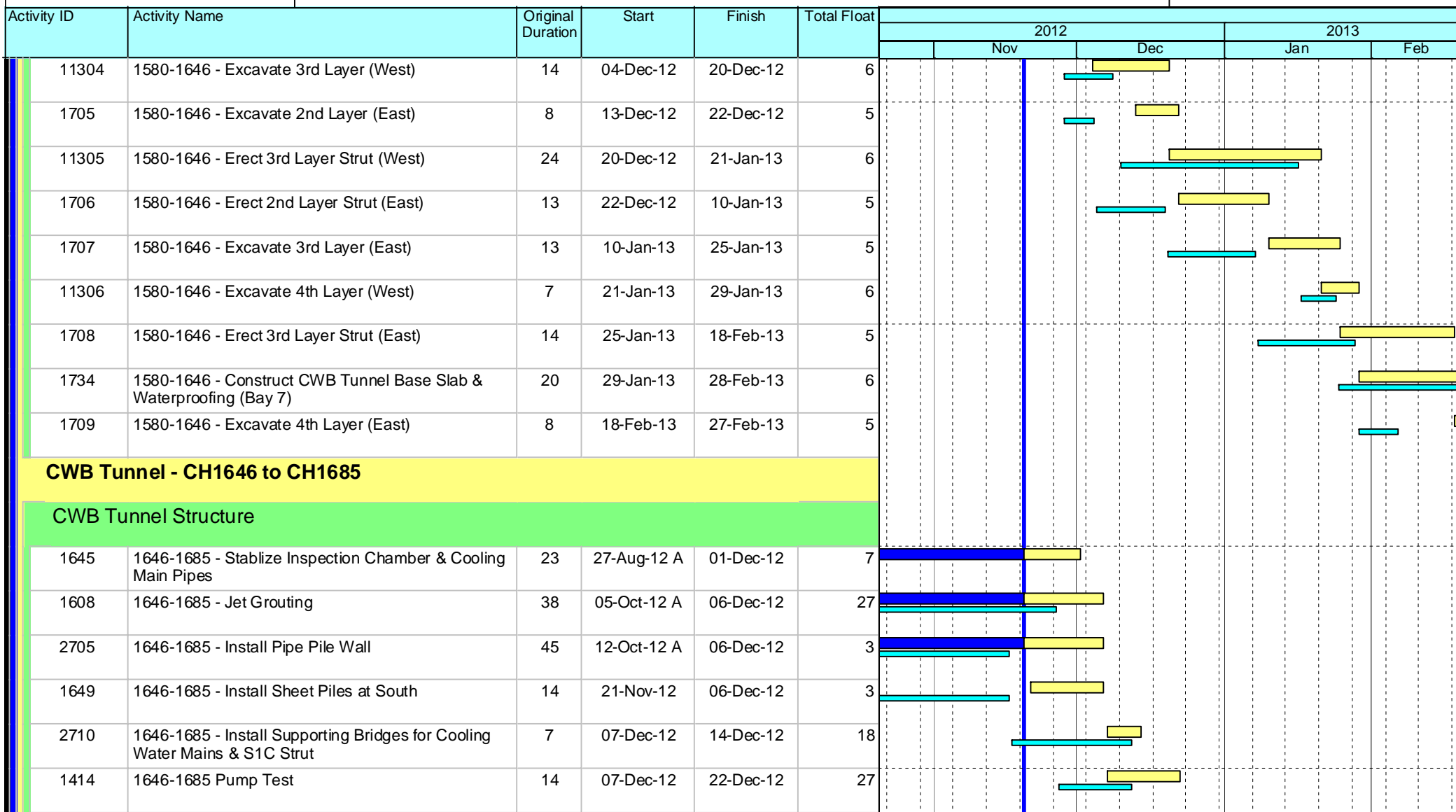
U025 Programme Update 26 (Nov 2012)			
Date	Revision	Checked	Approv..
21-Nov-12	U026	EC	RW
21-Oct-12	U025	RC	RW

Data Date: 20-Nov-12
 Print Date: 21-Nov-12

HY/2009/18 Central - Wan Chai Bypass (Central Interchange)



TASK filters: 3 Months, Not HL.



Leighton Contractors (Asia) Limited Programme Update 26 (Nov 2012) THREE MONTH ROLLING

Project ID: U026
 Baseline: DCP4-4
 Layout: Update Three Month Rolling U026
 Page 8 of 12

U025 Programme Update 26 (Nov 2012)			
Date	Revision	Checked	Approv..
21-Nov-12	U026	EC	RW
21-Oct-12	U025	RC	RW

Data Date: 20-Nov-12
 Print Date: 21-Nov-12

HY/2009/18 Central - Wan Chai Bypass (Central Interchange)



TASK filters: 3 Months, Not HL.

Activity ID	Activity Name	Original Duration	Start	Finish	Total Float	2012				2013	
						Nov		Dec		Jan	Feb
1710	1646-1685 - Excavate to 1st Layer (West) 1634-1650	6	07-Dec-12	13-Dec-12	27						
1644	1646-1685 - Excavate to S1B Layer East & West (+4.5mPD)	12	07-Dec-12	20-Dec-12	3						
11480	1646-1685 - Demolish Existing Roof Slab at East & West	20	10-Dec-12	04-Jan-13	3						
1711	1646-1685 - Erect 1st Layer Strut (West) 1634-1650	15	14-Dec-12	03-Jan-13	27						
1712	1646-1685 - Excavate to 2nd Layer (West) 1634-1650	6	04-Jan-13	10-Jan-13	27						
11400	1646-1685 - Excavate to S1B Layer	12	05-Jan-13	18-Jan-13	3						
1713	1646-1685 - Erect 2nd Layer Strut (West) 1634-1650	15	11-Jan-13	28-Jan-13	27						
11410	1646-1685 - Erect S1B Layer Strut	11	19-Jan-13	31-Jan-13	3						
1714	1646-1685 - Excavate to 3rd Layer (West) 1634-1650	6	29-Jan-13	04-Feb-13	27						
11420	1646-1685 - Excavate to S1 Layer	11	01-Feb-13	20-Feb-13	3						
1715	1646-1685 - Erect 3rd Layer Strut (West) 1634-1650	10	05-Feb-13	22-Feb-13	27						

SECTION 5 - ALL WORKS IN PORTION V & VA

General Surface Works

Formation & Roadworks - Man Kwong Street West Bound

2102	MKSVWB - Tree Transplanting / Felling	25	30-Jan-12 A	10-Nov-12 A	
------	---------------------------------------	----	-------------	-------------	--

CWB Trough B - CH1360 to CH1480

Trough Structure

- ◆ Current Milestone
- Critical Remaining Work
- Level of Effort
- Remaining Work
- ▲ Baseline Milestone
- Project Baseline
- Actual Work

Leighton Contractors (Asia) Limited Programme Update 26 (Nov 2012) THREE MONTH ROLLING

Project ID: U026
 Baseline: DCP4-4
 Layout: Update Three Month Rolling U026
 Page 9 of 12

U025 Programme Update 26 (Nov 2012)			
Date	Revision	Checked	Approv...
21-Nov-12	U026	EC	RW
21-Oct-12	U025	RC	RW

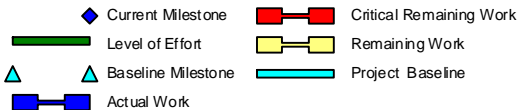
HY/2009/18 Central - Wan Chai Bypass (Central Interchange)



TASK filters: 3 Months, Not HL.

Activity ID	Activity Name	Original Duration	Start	Finish	Total Float	2012					2013				
						Nov		Dec		Jan		Feb			
						Actual	Remaining	Actual	Remaining	Actual	Remaining	Actual	Remaining		
Trough Phase 1															
1766	TRB - Removal of Struts	6	16-Oct-12 A	13-Nov-12 A		Actual	Remaining								
1269	TRB - Construct Wall - Phase 1 North Bottom Portion	24	20-Nov-12	17-Dec-12	56			Actual	Remaining						
1270	TRB - Backfill & Removal Strut - Phase 1 North Wall	12	18-Dec-12	03-Jan-13	56				Actual	Remaining					
1271	TRB - Construct Wall - Phase 1 North Top Portion	24	04-Jan-13	31-Jan-13	56					Actual	Remaining				
1272	TRB - Backfill - Phase 1 North Wall	18	01-Feb-13	28-Feb-13	56						Actual	Remaining			
Trough Phase 2b															
11640	TRB - Excavate 3rd Layer (Ch1480 Corner)	6	04-Oct-12 A	03-Nov-12 A		Actual	Remaining								
1360	TRB - Excavate 2nd Layer (Remaining)	12	09-Oct-12 A	05-Nov-12 A		Actual	Remaining								
11650	TRB - Erect 3rd Layer Support (1 Strut)	8	06-Nov-12 A	22-Nov-12	6			Actual	Remaining						
1385	TRB - Erect 2nd Layer Support (2 Struts)	13	06-Nov-12 A	23-Nov-12	5			Actual	Remaining						
11660	TRB - Excavate 4th Layer (Ch1480 Corner)	4	23-Nov-12	27-Nov-12	6				Actual	Remaining					
1394	TRB - Excavate 3rd Layer (Remaining)	15	24-Nov-12	11-Dec-12	5				Actual	Remaining					
1460	TRB - Erect 3rd Layer Support (1 Strut)	8	12-Dec-12	20-Dec-12	5					Actual	Remaining				
1517	TRB - Excavate 4th Layer (Remaining)	8	21-Dec-12	02-Jan-13	5						Actual	Remaining			
1276	TRB - Construct Trough Slab - 2b	67	03-Jan-13	28-Mar-13	5							Actual	Remaining		

SECTION 6 - ALL WORKS IN PORTION VI



Leighton Contractors (Asia) Limited Programme Update 26 (Nov 2012) THREE MONTH ROLLING

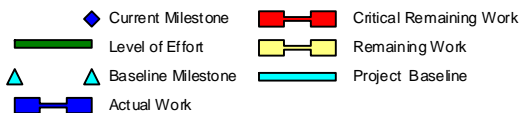
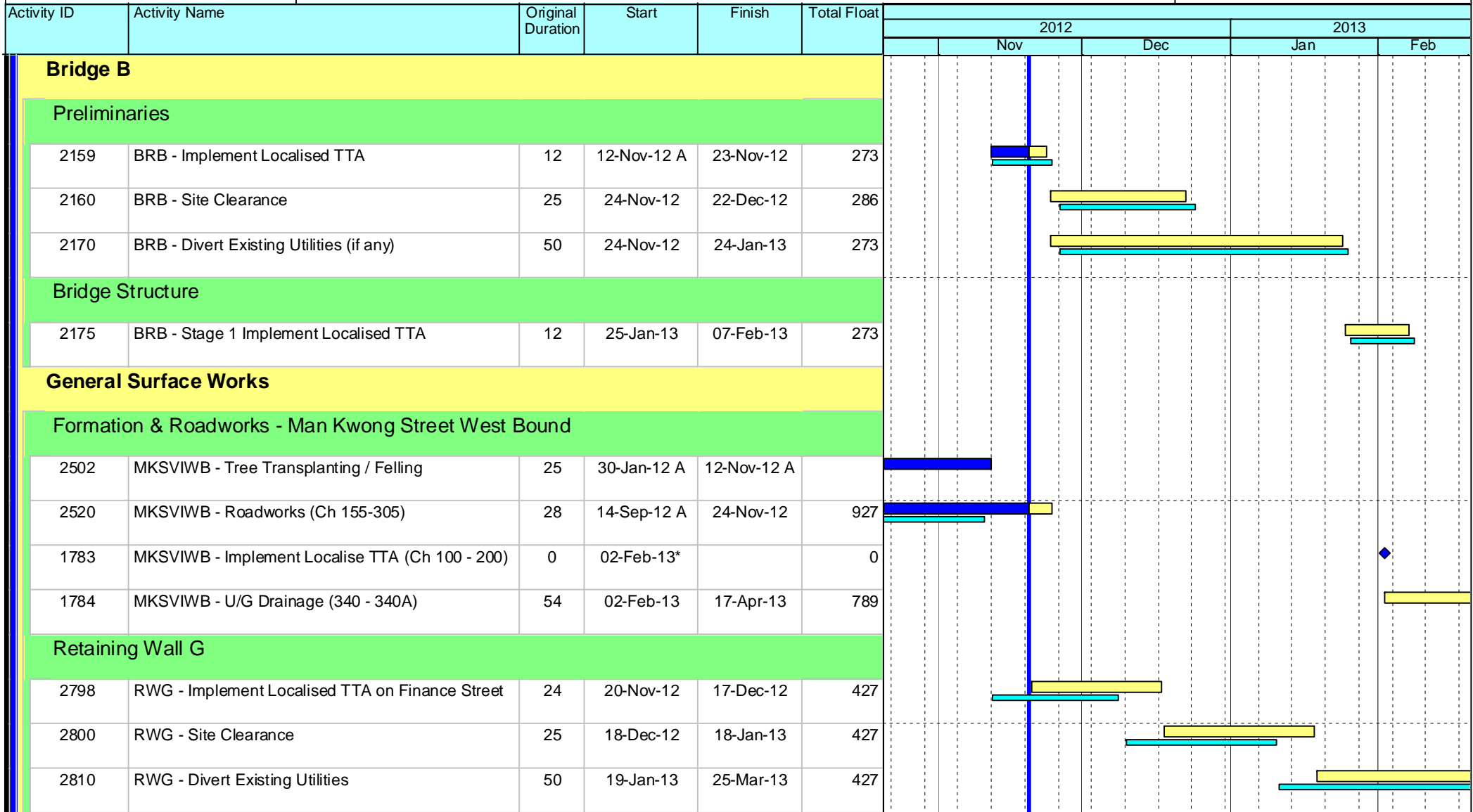
Project ID: U026
 Baseline: DCP4-4
 Layout: Update Three Month Rolling U026
 Page 10 of 12

U025 Programme Update 26 (Nov 2012)			
Date	Revision	Checked	Approv...
21-Nov-12	U026	EC	RW
21-Oct-12	U025	RC	RW

HY/2009/18 Central - Wan Chai Bypass (Central Interchange)



TASK filters: 3 Months, Not HL.



Leighton Contractors (Asia) Limited Programme Update 26 (Nov 2012) THREE MONTH ROLLING

Project ID: U026
 Baseline: DCP4-4
 Layout: Update Three Month Rolling U026
 Page 11 of 12

U025 Programme Update 26 (Nov 2012)			
Date	Revision	Checked	Approv...
21-Nov-12	U026	EC	RW
21-Oct-12	U025	RC	RW

Data Date: 20-Nov-12
 Print Date: 21-Nov-12

HY/2009/18 Central - Wan Chai Bypass (Central Interchange)



TASK filters: 3 Months, Not HL.

Activity ID	Activity Name	Original Duration	Start	Finish	Total Float	2012				2013	
						Nov		Dec	Jan	Feb	
						Nov	Dec	Dec	Jan	Feb	
Bridge A											
Preliminaries											
2250	BRA - Site Clearance	56	16-Jun-12 A	06-Nov-12 A		[Actual Work Bar]					
Bridge Structure											
2280	BRA - Pre-bored H Piles (1 no.)	12	10-Nov-12 A	23-Nov-12 A			[Actual Work Bar]				
2330	BRA - Loading Test	10	23-Nov-12 A	03-Dec-12	266			[Remaining Work Bar]			
2354	BRA - Pre-bored H Piles (27 nos.)	81	04-Dec-12	18-Mar-13	266				[Remaining Work Bar]		
Elevated Layby at Rumsey Street Flyover East Bound											
Preliminaries											
2460	RSFLB - Implement Localised TTA	12	11-Dec-12	24-Dec-12	529			[Remaining Work Bar]			
1113	RSFLB - Tree Transplantation	50	27-Dec-12	02-Mar-13	529				[Remaining Work Bar]		

- ◆ Current Milestone
- Critical Remaining Work
- Level of Effort
- Remaining Work
- ▲ Baseline Milestone
- Project Baseline
- Actual Work

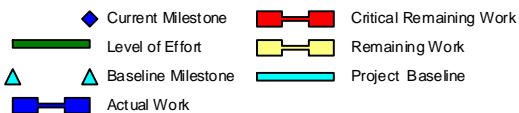
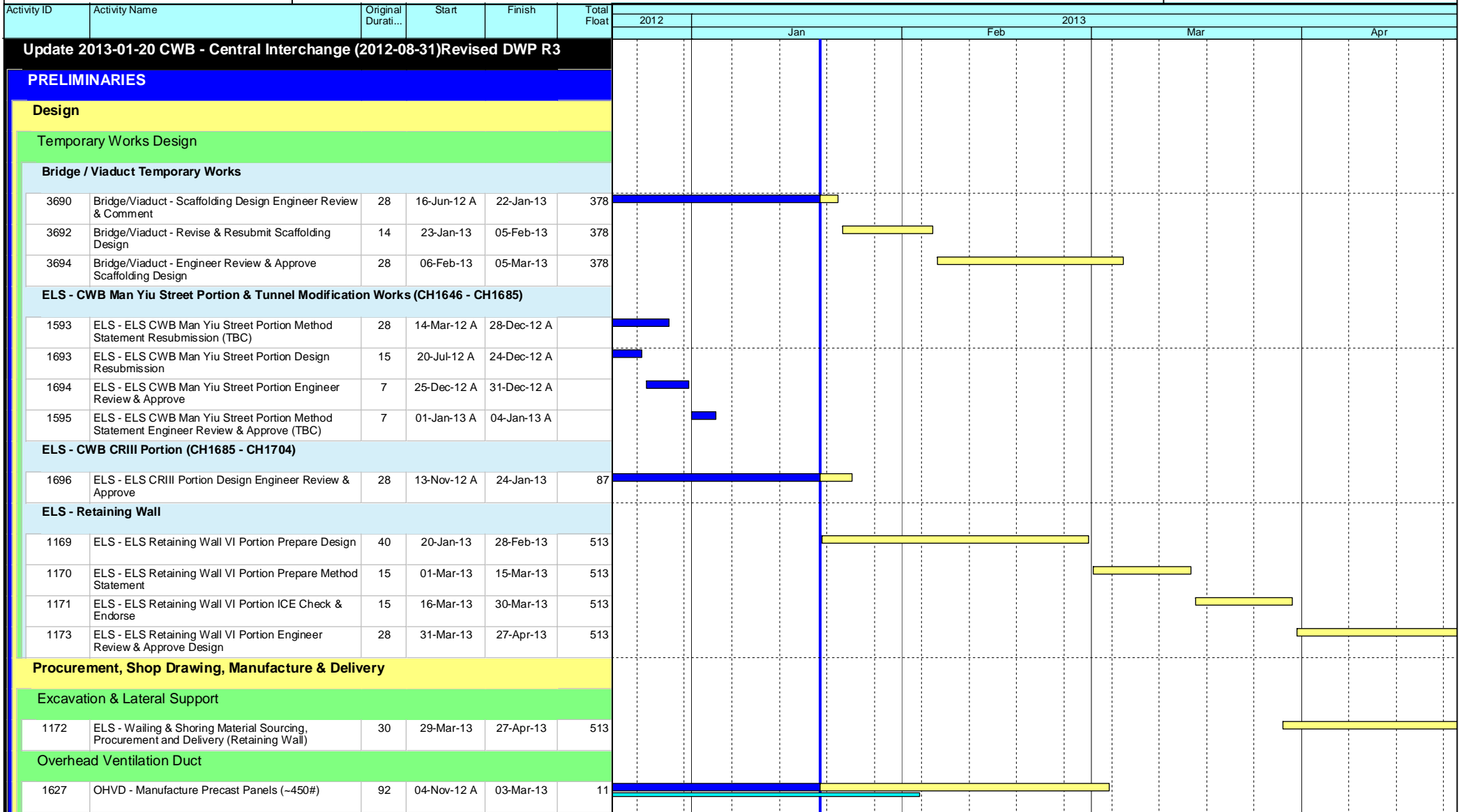
Leighton Contractors (Asia) Limited Programme Update 26 (Nov 2012) THREE MONTH ROLLING

Project ID: U026
 Baseline: DCP4-4
 Layout: Update Three Month Rolling U026
 Page 12 of 12

U025 Programme Update 26 (Nov 2012)			
Date	Revision	Checked	Approv...
21-Nov-12	U026	EC	RW
21-Oct-12	U025	RC	RW

HY/2009/18 Central - Wan Chai Bypass (Central Interchange)

TASK filters: 3 Months, Not HL.



Leighton Contractors (Asia) Limited Programme Update 28 (Jan 2013) THREE MONTH ROLLING

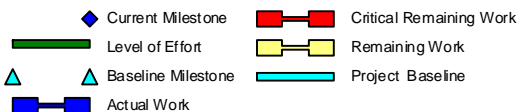
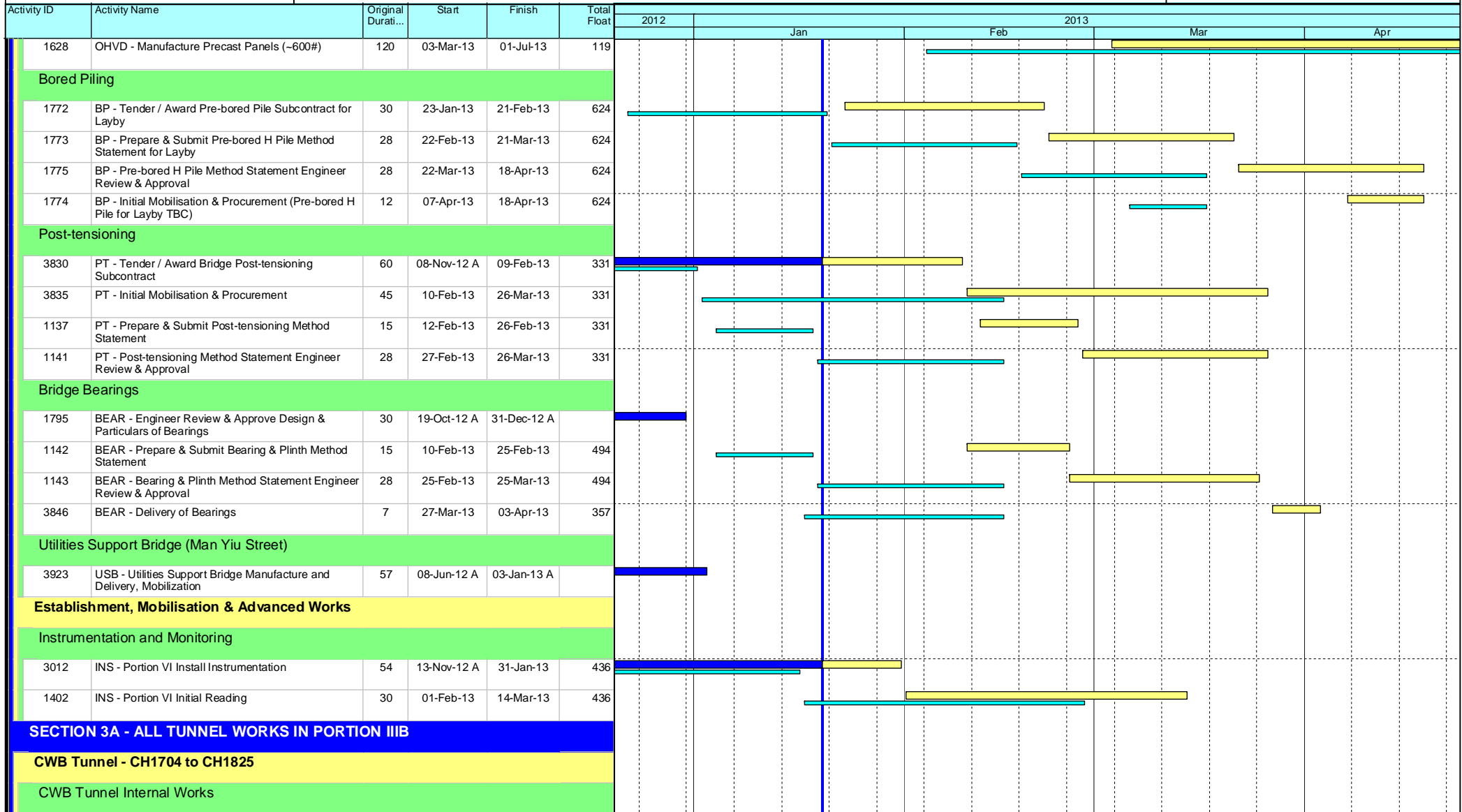
Project ID: U028
 Baseline: DCP4-4
 Layout: Update Three Month Rolling U028
 Page 1 of 7

U027 Programme Update 28 (Jan 2013)			
Date	Revision	Checked	Approv...
21-Jan-13	U028	EC	RW
21-Dec-12	U027	EC	RW

Data Date: 20-Jan-13

HY/2009/18 Central - Wan Chai Bypass (Central Interchange)

TASK filters: 3 Months, Not HL.



Leighton Contractors (Asia) Limited Programme Update 28 (Jan 2013) THREE MONTH ROLLING

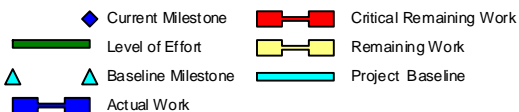
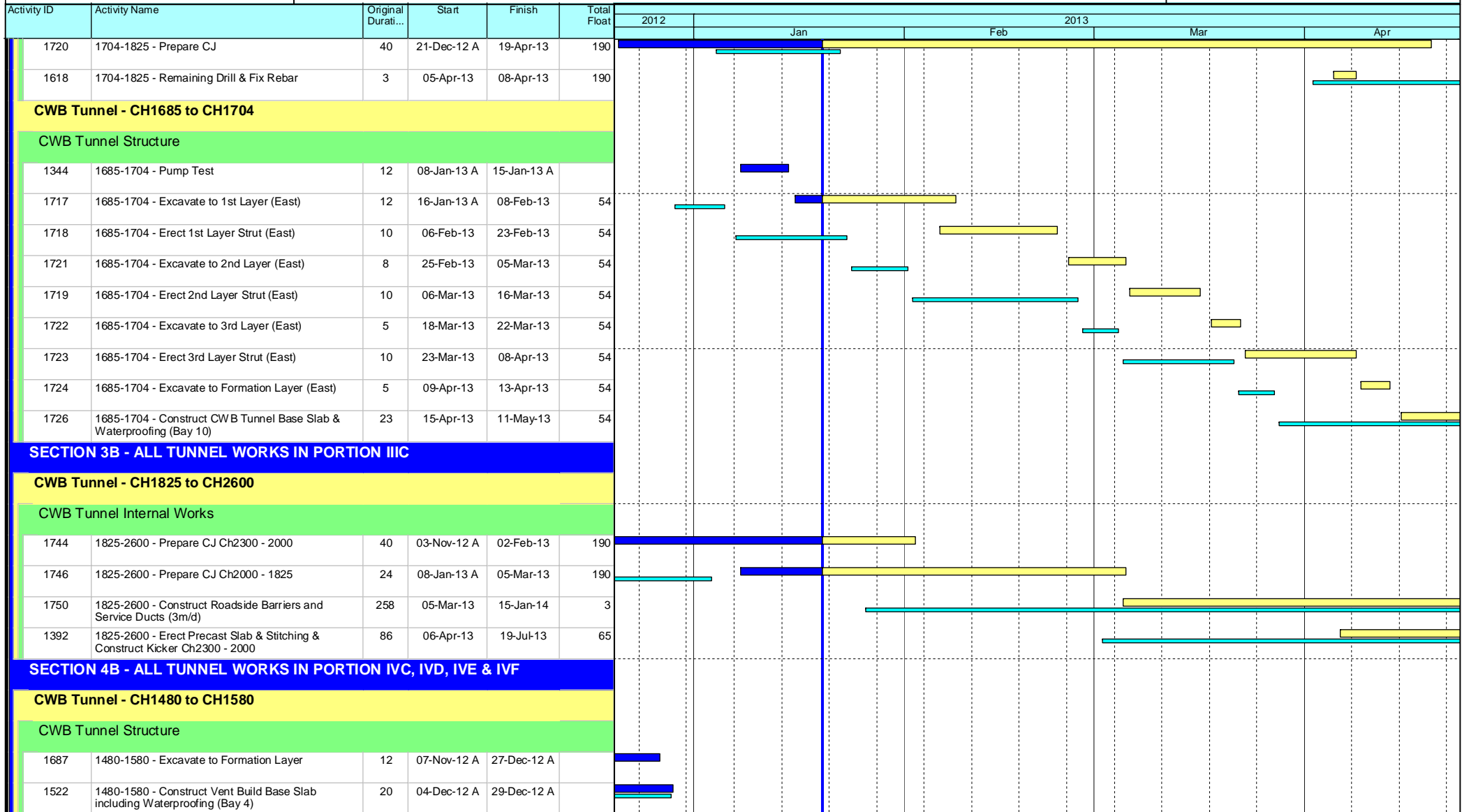
Project ID: U028
Baseline: DCP4-4
Layout: Update Three Month Rolling U028
Page 2 of 7

U027 Programme Update 28 (Jan 2013)			
Date	Revision	Checked	Approv...
21-Jan-13	U028	EC	RW
21-Dec-12	U027	EC	RW

HY/2009/18 Central - Wan Chai Bypass (Central Interchange)



TASK filters: 3 Months, Not HL.



Leighton Contractors (Asia) Limited Programme Update 28 (Jan 2013) THREE MONTH ROLLING

Project ID: U028
 Baseline: DCP4-4
 Layout: Update Three Month Rolling U028
 Page 3 of 7

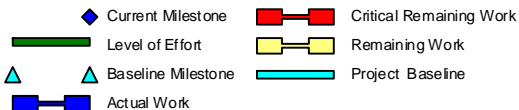
U027 Programme Update 28 (Jan 2013)			
Date	Revision	Checked	Approv...
21-Jan-13	U028	EC	RW
21-Dec-12	U027	EC	RW

HY/2009/18 Central - Wan Chai Bypass (Central Interchange)



TASK filters: 3 Months, Not HL.

Activity ID	Activity Name	Original Durati...	Start	Finish	Total Float	2013			
						Jan	Feb	Mar	Apr
1594	1480-1580 - Erect RE Wall & Backfill for Tunnel Baseslab (Bay 5)	18	21-Dec-12 A	25-Jan-13	58				
1519	1480-1580 - Construct Vent Build Base Slab including Waterproofing (Bay 2)	22	30-Dec-12 A	02-Feb-13	6				
1585	1480-1580 - Construct Vent Build Basement Bearing Wall	32	30-Dec-12 A	16-Mar-13	29				
1610	1480-1580 - Construct Vent Build Tunnel Base Slab including Waterproofing (Bay 6)	16	08-Jan-13 A	07-Feb-13	41				
1526	1480-1580 - Construct Vent Build Basement Outer Wall (1535)	20	16-Jan-13 A	19-Feb-13	41				
1702	1480-1580 - Construct Vent Build Tunnel Base Slab including Waterproofing (Bay 5)	23	26-Jan-13	28-Feb-13	58				
1747	1480-1580 - Erect Struct S3A & Remove the Soil Berm	6	02-Feb-13	08-Feb-13	6				
1748	1480-1580 - Dismantle of Basement Struts (Layer 3 & 4)	30	06-Feb-13	19-Mar-13	27				
1698	1480-1580 - Construct Vent Build Tunnel Central Wall (Bay 6)	20	08-Feb-13	09-Mar-13	41				
1523	1480-1580 - Construct Vent Build Base Slab including Waterproofing (Bay 1)	15	16-Feb-13	05-Mar-13	6				
1690	1480-1580 - Construct Vent Build Tunnel Base Slab including Waterproofing (Bay 4)	25	20-Feb-13	20-Mar-13	41				
1762	1480-1580 - Construct Vent Build Tunnel Central Wall (Bay 5)	18	01-Mar-13	21-Mar-13	58				
1524	1480-1580 - Construct Vent Build Basement Outer Wall & Backfill (1480)	23	06-Mar-13	05-Apr-13	31				
1699	1480-1580 - Construct Vent Build Tunnel OHVD & Kickers (Bay 6)	18	11-Mar-13	03-Apr-13	41				
1527	1480-1580 - Construct Vent Build Basement Internal Wall	15	13-Mar-13	02-Apr-13	6				
1580	1480-1580 - Construct Vent Build Mezzanine Floor Slab	20	20-Mar-13	16-Apr-13	6				
1754	1480-1580 - Construct Vent Build Tunnel Central Wall (Bay 4)	18	21-Mar-13	15-Apr-13	86				
1761	1480-1580 - Construct Vent Build Tunnel OHVD & Kickers (Bay 5)	18	02-Apr-13	23-Apr-13	58				
1725	1480-1580 - Construct Vent Build Tunnel Top Slab (Bay 6)	40	05-Apr-13	23-May-13	41				
1760	1480-1580 - Construct Vent Build Tunnel OHVD & Kickers (Bay 4 - Top Down Slab)	18	16-Apr-13	07-May-13	86				
1590	1480-1580 - Construct Vent Build Tunnel Base Slab (Bay 2)	25	17-Apr-13	16-May-13	7				
SECTION 4A - ALL TUNNEL WORKS IN PORTION IVA, IVB, IVG & IVH									
CWB Tunnel - CH1580 to CH1646									
CWB Tunnel Structure									
11304	1580-1646 - Excavate 3rd Layer (West)	14	08-Dec-12 A	20-Dec-12 A					



Leighton Contractors (Asia) Limited Programme Update 28 (Jan 2013) THREE MONTH ROLLING

Project ID: U028
 Baseline: DCP4-4
 Layout: Update Three Month Rolling U028
 Page 4 of 7

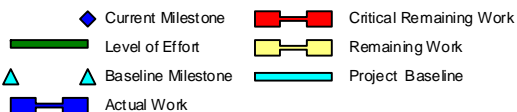
U027 Programme Update 28 (Jan 2013)			
Date	Revision	Checked	Approv...
21-Jan-13	U028	EC	RW
21-Dec-12	U027	EC	RW

HY/2009/18 Central - Wan Chai Bypass (Central Interchange)



TASK filters: 3 Months, Not HL.

Activity ID	Activity Name	Original Durati...	Start	Finish	Total Float	2013			
						Jan	Feb	Mar	Apr
11305	1580-1646 - Erect 3rd Layer Strut (West)	20	21-Dec-12 A	02-Jan-13 A		[Gantt bar: Dec 21 - Jan 2]			
1705	1580-1646 - Excavate 2nd Layer (East)	8	22-Dec-12 A	29-Jan-13	3	[Gantt bar: Dec 22 - Jan 29]			
1734	1580-1646 - Construct CWB Tunnel Base Slab & Waterproofing (Bay 7)	20	11-Jan-13 A	23-Feb-13	9	[Gantt bar: Jan 11 - Feb 23]			
11306	1580-1646 - Excavate 4th Layer (West)	7	21-Jan-13	28-Jan-13	9	[Gantt bar: Jan 21 - Jan 28]			
1706	1580-1646 - Erect 2nd Layer Strut (East)	6	30-Jan-13	05-Feb-13	3	[Gantt bar: Jan 30 - Feb 5]			
1707	1580-1646 - Excavate 3rd Layer (East)	4	06-Feb-13	16-Feb-13	3	[Gantt bar: Feb 6 - Feb 16]			
1708	1580-1646 - Erect 3rd Layer Strut (East)	6	18-Feb-13	23-Feb-13	3	[Gantt bar: Feb 18 - Feb 23]			
1709	1580-1646 - Excavate 4th Layer (East)	4	25-Feb-13	28-Feb-13	3	[Gantt bar: Feb 25 - Feb 28]			
1737	1580-1646 - Construct CWB Tunnel Center Wall (Bay 7)	18	25-Feb-13	16-Mar-13	9	[Gantt bar: Feb 25 - Mar 16]			
1735	1580-1646 - Construct CWB Tunnel Base Slab & Waterproofing (Bay 8)	20	01-Mar-13	23-Mar-13	3	[Gantt bar: Mar 1 - Mar 23]			
1736	1580-1646 - Construct CWB Tunnel Base Slab & Waterproofing (Bay 9)	18	16-Mar-13	10-Apr-13	6	[Gantt bar: Mar 16 - Apr 10]			
1740	1580-1646 - Construct CWB Tunnel OHVD & Kickers (Bay 7)	18	18-Mar-13	11-Apr-13	9	[Gantt bar: Mar 18 - Apr 11]			
1738	1580-1646 - Construct CWB Tunnel Center Wall (Bay 8)	18	25-Mar-13	18-Apr-13	3	[Gantt bar: Mar 25 - Apr 18]			
1739	1580-1646 - Construct CWB Tunnel Center Wall (Bay 9)	18	11-Apr-13	02-May-13	6	[Gantt bar: Apr 11 - May 2]			
1743	1580-1646 - Construct CWB Tunnel Top Slab (Bay 7)	39	12-Apr-13	29-May-13	9	[Gantt bar: Apr 12 - May 29]			
1741	1580-1646 - Construct CWB Tunnel OHVD & Kickers (Bay 8)	18	19-Apr-13	10-May-13	3	[Gantt bar: Apr 19 - May 10]			
CWB Tunnel - CH1646 to CH1685									
CWB Tunnel Structure									
1608	1646-1685 - Jet Grouting	38	05-Oct-12 A	21-Jan-13	6	[Gantt bar: Oct 5 - Jan 21]			
2710	1646-1685 - Install Supporting Bridges for Cooling Water Mains & Install S1A Strut	35	13-Dec-12 A	04-Feb-13	0	[Gantt bar: Dec 13 - Feb 4]			
1414	1646-1685 Pump Test	3	08-Jan-13 A	15-Jan-13 A		[Gantt bar: Jan 8 - Jan 15]			
11480	1646-1685 - Demolish Existing Roof Slab at East & West	10	12-Jan-13 A	04-Feb-13	0	[Gantt bar: Jan 12 - Feb 4]			
1644	1646-1685 - Excavate to S1B Layer East & West (+4.5mPD)	12	21-Jan-13	02-Feb-13	4	[Gantt bar: Jan 21 - Feb 2]			
1710	1646-1685 - Excavate to 1st Layer (West) 1634-1650	6	22-Jan-13	28-Jan-13	6	[Gantt bar: Jan 22 - Jan 28]			
1711	1646-1685 - Erect 1st Layer Strut (West) 1634-1650	6	29-Jan-13	04-Feb-13	6	[Gantt bar: Jan 29 - Feb 4]			



Leighton Contractors (Asia) Limited Programme Update 28 (Jan 2013) THREE MONTH ROLLING

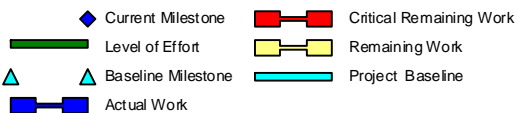
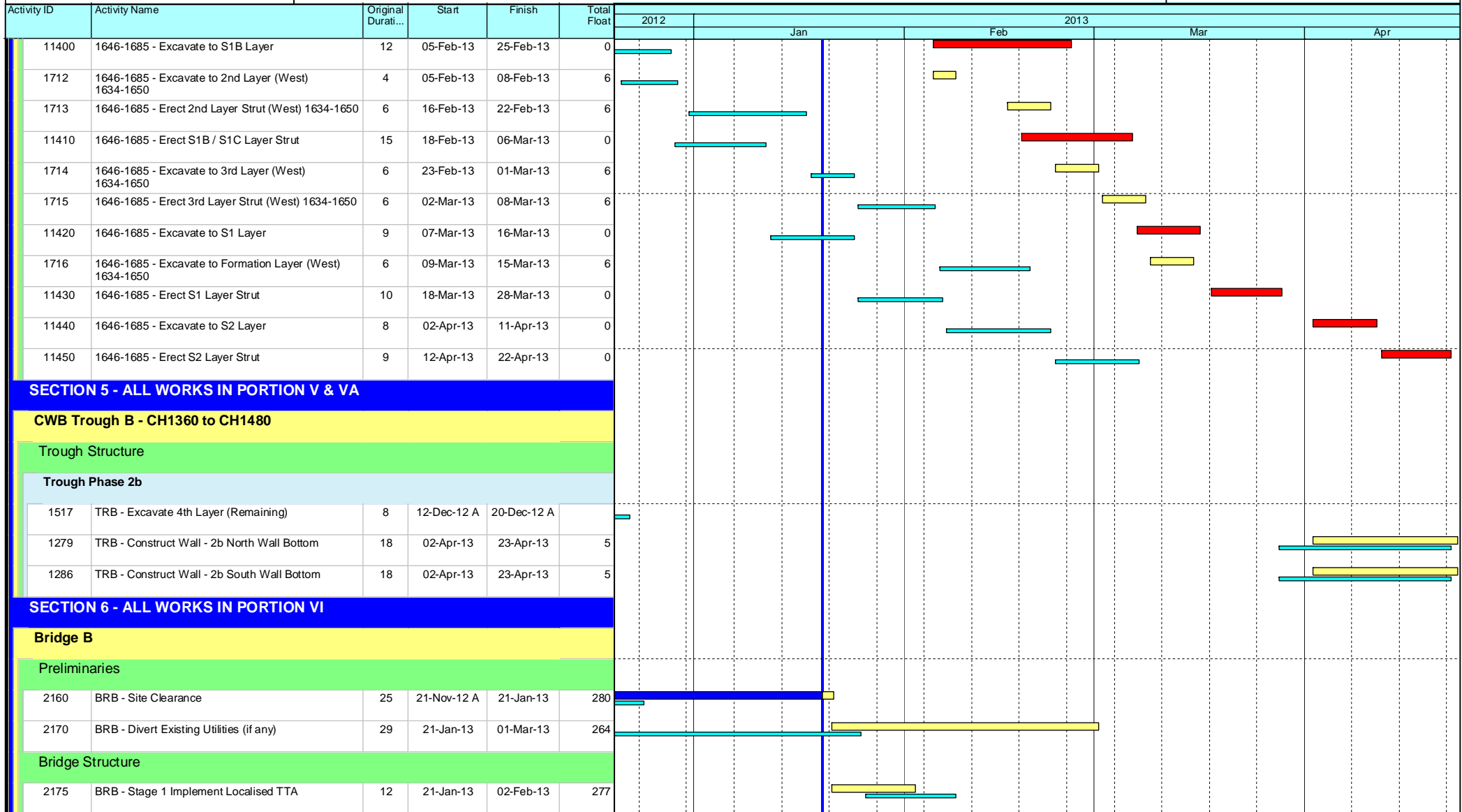
Project ID: U028
 Baseline: DCP4-4
 Layout: Update Three Month Rolling U028
 Page 5 of 7

U027 Programme Update 28 (Jan 2013)			
Date	Revision	Checked	Approv...
21-Jan-13	U028	EC	RW
21-Dec-12	U027	EC	RW

HY/2009/18 Central - Wan Chai Bypass (Central Interchange)



TASK filters: 3 Months, Not HL.



Leighton Contractors (Asia) Limited Programme Update 28 (Jan 2013) THREE MONTH ROLLING

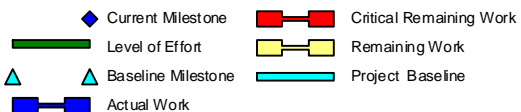
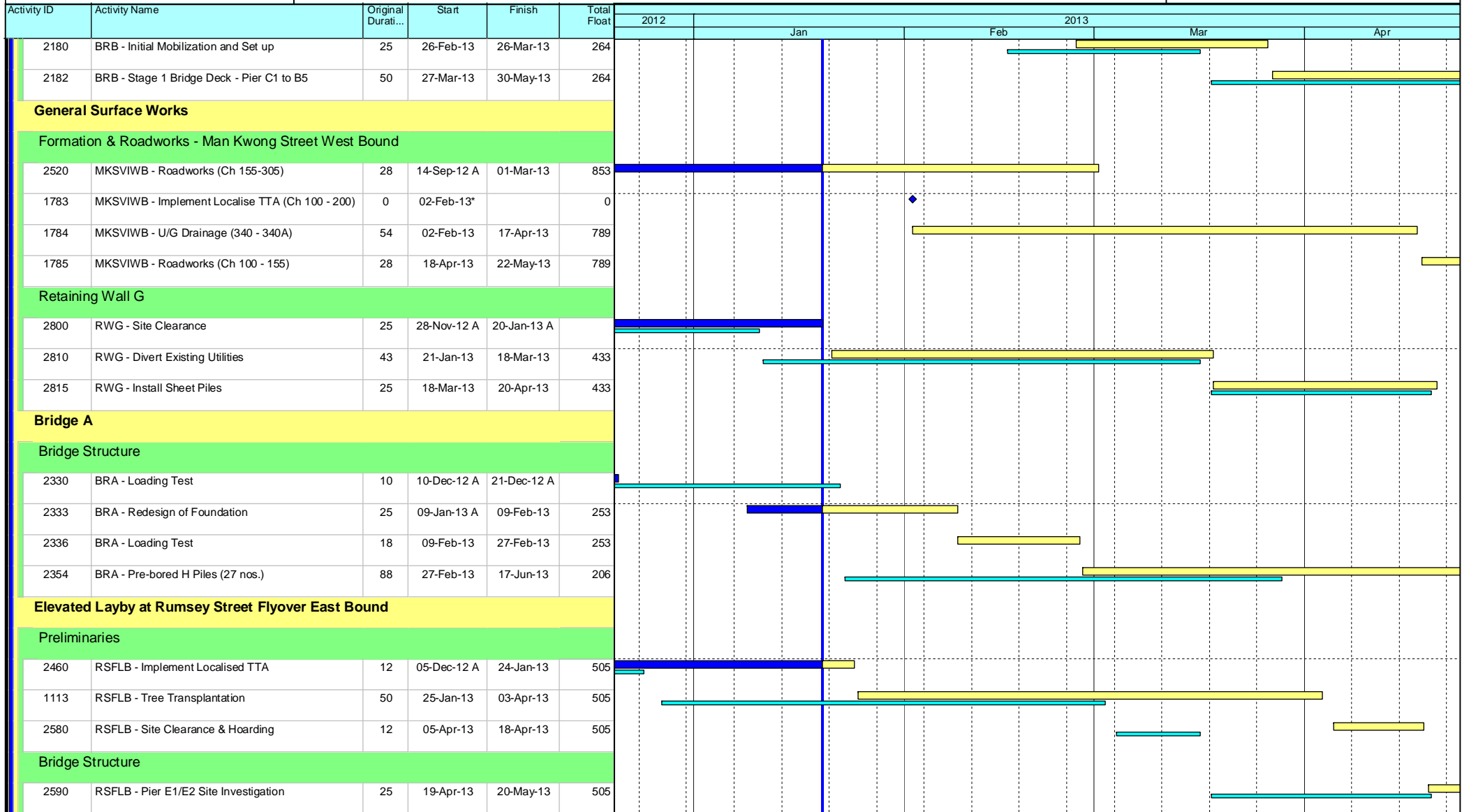
Project ID: U028
 Baseline: DCP4-4
 Layout: Update Three Month Rolling U028
 Page 6 of 7

U027 Programme Update 28 (Jan 2013)			
Date	Revision	Checked	Approv...
21-Jan-13	U028	EC	RW
21-Dec-12	U027	EC	RW

Data Date: 20-Jan-13

HY/2009/18 Central - Wan Chai Bypass (Central Interchange)

TASK filters: 3 Months, Not HL.



Leighton Contractors (Asia) Limited Programme Update 28 (Jan 2013) THREE MONTH ROLLING

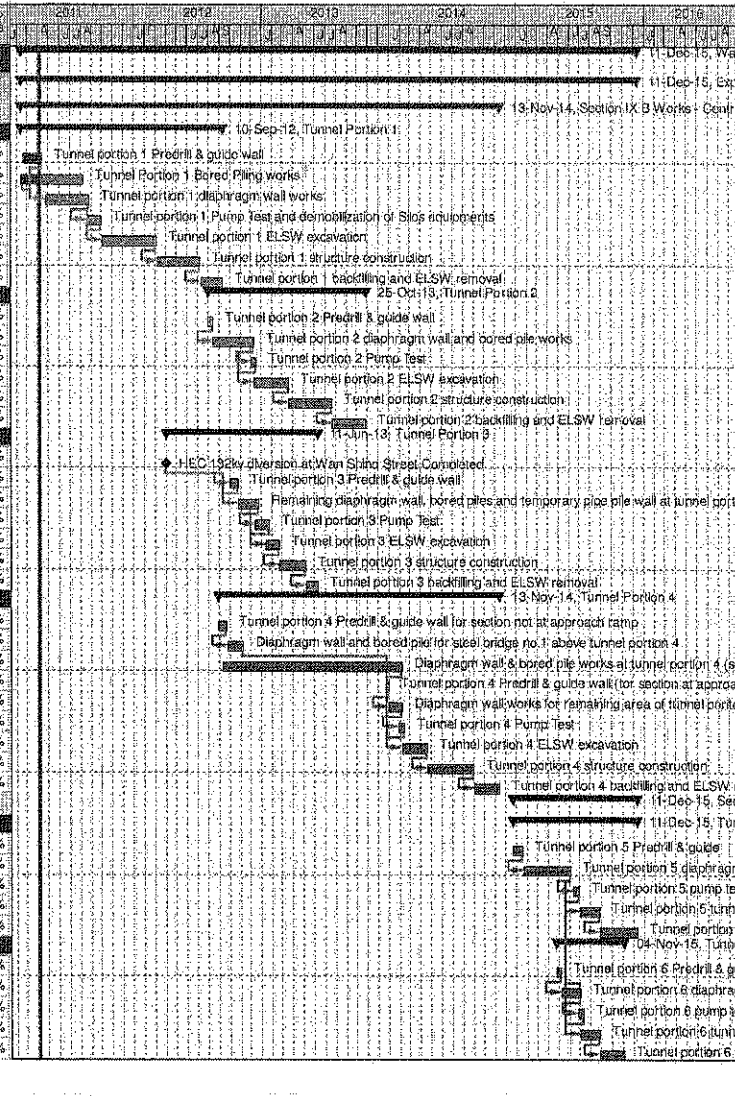
Project ID: U028
Baseline: DCP4-4
Layout: Update Three Month Rolling U028
Page 7 of 7

U027 Programme Update 28 (Jan 2013)			
Date	Revision	Checked	Approv...
21-Jan-13	U028	EC	RW
21-Dec-12	U027	EC	RW

Wan Chai Development Phase II - Central - Wan Chai
Bypass at Wan Chai East CONTRACT HK/2009/02

CHUN WO - CRGL JV

Activity ID	Activity Name	OD	Start	Finish	% Planned	2011	2012	2013	2014	2015	2016
Wan Chai Development Phase II - Central - Wan Chai Bypass at Wan Chai East											
Expanded and More Detailed Initial Works Programme											
Section IX B Works - Central - Wan Chai Bypass Tunnel Structure from chainage 3400 to eastern tunnel											
Tunnel Portion 1											
S9B-T1-0005	Tunnel portion 1 Predrill & guide wall	10	18-Feb-11	13-Apr-11	40%						
S9B-T1-0007	Tunnel Portion 1 Bored Piling works	105	09-Feb-11	08-Aug-11	0%						
S9B-T1-0010	Tunnel portion 1 diaphragm wall works	105	26-Apr-11	27-Aug-11	0%						
S9B-T1-0015	Tunnel portion 1 Pump Test and demobilization of Slos equipments	35	20-Aug-11	30-Sep-11	0%						
S9B-T1-0020	Tunnel portion 1 ELSW excavation	130	03-Oct-11	07-Mar-12	0%						
S9B-T1-0030	Tunnel portion 1 structure construction	100	09-Mar-12	09-Jul-12	0%						
S9B-T1-0040	Tunnel portion 1 backfilling and ELSW removal	54	10-Jul-12	10-Sep-12	0%						
Tunnel Portion 2											
S9B-T2-0105	Tunnel portion 2 Predrill & guide wall	10	02-Aug-12	13-Aug-12	0%						
S9B-T2-0010	Tunnel portion 2 diaphragm wall and bored pile works	100	14-Aug-12	10-Dec-12	0%						
S9B-T2-0015	Tunnel portion 2 Pump Test	14	03-Dec-12	18-Dec-12	0%						
S9B-T2-0020	Tunnel portion 2 ELSW excavation	80	11-Dec-12	19-Mar-13	0%						
S9B-T2-0030	Tunnel portion 2 structure construction	100	20-Mar-13	22-Jul-13	0%						
S9B-T2-0040	Tunnel portion 2 backfilling and ELSW removal	80	23-Jul-13	25-Oct-13	0%						
Tunnel Portion 3											
S9B-T3-0005	HEC 132kv diversion at Wan Shing Street Completed	0	01-Apr-12*		0%						
S9B-T3-0008	Tunnel portion 3 Predrill & guide wall	20	02-Oct-12	25-Oct-12	0%						
S9B-T3-0010	Remaining diaphragm wall, bored piles and temporary pipe pile wall at tunnel portion 3.	50	25-Oct-12	22-Dec-12	0%						
S9B-T3-0015	Tunnel portion 3 Pump Test	30	15-Dec-12	22-Jan-13	0%						
S9B-T3-0020	Tunnel portion 3 ELSW excavation	30	15-Jan-13	20-Feb-13	0%						
S9B-T3-0030	Tunnel portion 3 structure construction	80	21-Feb-13	06-May-13	0%						
S9B-T3-0040	Tunnel portion 3 backfilling and ELSW removal	30	07-May-13	11-Jun-13	0%						
Tunnel Portion 4											
S9B-T4-0005	Tunnel portion 4 Predrill & guide wall for section not at approach ramp	21	30-Aug-12	22-Sep-12	0%						
S9B-T4-0010	Diaphragm wall and bored pile for steel bridge no.1 above tunnel portion 4	40	24-Sep-12	10-Nov-12	0%						
S9B-T4-0020	Diaphragm wall & bored pile works at tunnel portion 4 (section not at approach ramp)	420	11-Sep-12	05-Feb-14	0%						
S9B-T4-0025	Tunnel portion 4 Predrill & guide wall (for section at approach ramp)	5	23-Dec-13	30-Dec-13	0%						
S9B-T4-0030	Diaphragm wall works for remaining area of tunnel portion 4 (for section at approach ramp)	30	31-Dec-13	06-Feb-14	0%						
S9B-T4-0035	Tunnel portion 4 Pump Test	14	28-Jan-14	14-Feb-14	0%						
S9B-T4-0040	Tunnel portion 4 ELSW excavation	60	07-Feb-14	19-Apr-14	0%						
S9B-T4-0050	Tunnel portion 4 structure construction	110	22-Apr-14	01-Sep-14	0%						
S9B-T4-0060	Tunnel portion 4 backfilling and ELSW removal	60	02-Sep-14	13-Nov-14	0%						
Section X Works - Central - Wan Chai Bypass Tunnel Structure from western tunnel to chainage 3400											
Tunnel Portion 5											
S10-T5-0005	Tunnel portion 5 Predrill & guide	21	23-Dec-14	19-Jan-15	0%						
S10-T5-0010	Tunnel portion 5 diaphragm wall & bored pile works	110	20-Jan-15	04-Jun-15	0%						
S10-T5-0015	Tunnel portion 5 pump test	14	13-Jun-15	30-Jun-15	0%						
S10-T5-0020	Tunnel portion 5 tunnel ELSW excavation	45	04-Jul-15	25-Aug-15	0%						
S10-T5-0030	Tunnel portion 5 tunnel structure construction	90	26-Aug-15	11-Dec-15	0%						
Tunnel Portion 6											
S10-T6-0040	Tunnel portion 6 Predrill & guide	12	24-Apr-15	08-May-15	0%						
S10-T6-0050	Tunnel portion 6 diaphragm wall & bored pile works at Area 10	45	09-May-15	09-Jul-15	0%						
S10-T6-0055	Tunnel portion 6 pump test	14	25-Jun-15	11-Jul-15	0%						
S10-T6-0060	Tunnel portion 6 tunnel ELSW excavation at Area 10	45	04-Jul-15	26-Aug-15	0%						
S10-T6-0070	Tunnel portion 6 tunnel structure construction at Area 10	58	26-Aug-15	04-Nov-15	0%						



後和 - 中國中鐵聯合
 Chun Wo - CRGL JOINT VENTURE

Remaining Level of Effort Milestone
 Actual Level of Effort Summary
 Actual Work
 Remaining Work
 Critical Remaining Work

CEDD CONTRACT NO. HK/2009/02
 Wan Chai Development Phase II - Central Wan Chai Bypass at Wan Chai East (Contract 2)
 Revised Programme dated 7 April 2011

Date	Revision	Checked	Approved
07-Apr-11		KT	KY

Page 10 of 11

Activity ID	Activity Name	Rem Dur	Start	Finish	2012							2013							
					December				January			February			March				
					9	26	03	10	17	24	31	07	14	21	28	04	11	18	25
3MRP - DEC 2012 to Mar 2013																			
02 - PRE-CONSTRUCTION WORKS																			
02.2 - Contractor's Submission																			
0220-1360	Tunnel Structures Materials - Submission	12	19-Jul-12 A	31-Dec-12	Tunnel Structures Materials - Submission														
0220-1370	Tunnel Structures Materials - ER Review/Comment	28	01-Jan-13	28-Jan-13	Tunnel Structures Materials - ER Review/Comment														
0220-1380	Tunnel Structures Materials - Resubmission	14	29-Jan-13	11-Feb-13	Tunnel Structures Materials - Resubmission														
0220-1390	Tunnel Structures Materials - ER Approval	21	12-Feb-13	04-Mar-13	Tunnel Structures Materials - ER Approval														
0220-1500	Bridge Bearing - Procurement & Delivery (D8/D9/D10)	30	24-Sep-12 A	18-Jan-13*	Bridge Bearing - Procurement & Delivery (D8/D9/D10)														
0220-1400	Tunnel Structures Materials - Procurement & Delivery	60	05-Mar-13	03-May-13	Tunnel Structures Materials - Procurement & Delivery														
02.3 - Method Statement / Shop Drawings																			
0230-1280	MS Cut & Cover Tunnel ELS - Resubmission	12	13-Jul-12 A	31-Dec-12	MS Cut & Cover Tunnel ELS - Resubmission														
0230-1290	MS Cut & Cover Tunnel ELS - ER Approval	12	07-Aug-12 A	12-Jan-13	MS Cut & Cover Tunnel ELS - ER Approval														
0230-1350	MS Pre-cast Segment Launching - ER Review & Comment	9	20-Sep-12 A	28-Dec-12	MS Pre-cast Segment Launching - ER Review & Comment														
0230-1360	MS Pre-cast Segment Launching - Resubmission	28	29-Dec-12	25-Jan-13	MS Pre-cast Segment Launching - Resubmission														
0230-1370	MS Pre-cast Segment Launching - ER Approval	28	26-Jan-13	22-Feb-13	MS Pre-cast Segment Launching - ER Approval														
0230-1480	MS Stressing Tendons - Resubmission	9	08-Aug-12 A	28-Dec-12	MS Stressing Tendons - Resubmission														
0230-1490	MS Stressing Tendons - ER Approval	28	29-Dec-12	25-Jan-13	MS Stressing Tendons - ER Approval														
0230-1580	MS Interim & Permanent Noise Semi Enclosure - Submission	28	04-Mar-13*	31-Mar-13	MS Interim & Permanent Noise Semi Enclosure - Submission														
0230-1320	MS Pre-casting Beam - Resubmission	12	03-Dec-12 A	31-Dec-12	MS Pre-casting Beam - Resubmission														
0230-1330	MS Pre-casting Beam - ER Approval	21	01-Jan-13	21-Jan-13	MS Pre-casting Beam - ER Approval														
02.4 - Contractor's Design and Build Items																			
0240-1010	Temp Bridge "TA" Design - Prep & Submit	36	16-Dec-11 A	24-Jan-13	Temp Bridge "TA" Design - Prep & Submit														
0240-1020	Temp Bridge "TA" Design - ER review and comment	28	25-Jan-13	21-Feb-13	Temp Bridge "TA" Design - ER review and comment														
0240-1030	Temp Bridge "TA" Design - Resubmission	45	22-Feb-13	07-Apr-13	Temp Bridge "TA" Design - Resubmission														
0240-1041	Temp Bridge "TD" Design - Submission	28	04-Feb-13*	03-Mar-13	Temp Bridge "TD" Design - Submission														
0240-1105	Int. Noise Enclosure Structural Design - Submission	60	01-Mar-13*	29-Apr-13	Int. Noise Enclosure Structural Design - Submission														
0240-1126	Noise Barrier Design Structural Design - Submission	60	01-Mar-13*	29-Apr-13	Noise Barrier Design Structural Design - Submission														
0240-1150	Perm. Noise Enclosure Structural Design - Submission	60	01-Mar-13	29-Apr-13	Perm. Noise Enclosure Structural Design - Submission														
0240-1270	Landscaping Design - Submission	90	01-Mar-13*	29-May-13	Landscaping Design - Submission														
0240-1376	Cut & Cover Tunnel ELS Design - ER Review & Resubmission	7	14-Jun-12 A	26-Dec-12	Cut & Cover Tunnel ELS Design - ER Review & Resubmission														
0240-1377	Cut & Cover Tunnel ELS Design - ER Approval	15	27-Dec-12	10-Jan-13	Cut & Cover Tunnel ELS Design - ER Approval														
0240-1379	Cut & Cover Tunnel ELS Fabrication	60	11-Jan-13	11-Mar-13	Cut & Cover Tunnel ELS Fabrication														
0240-1050	Temp Bridge "TB" & "TC" Design - Prep & Submit	120	01-Mar-13*	28-Jun-13	Temp Bridge "TB" & "TC" Design - Prep & Submit														
0240-1042	Temp Bridge "TD" Design - ER review and comment	28	04-Mar-13	31-Mar-13	Temp Bridge "TD" Design - ER review and comment														
02.5 - Bridge Segment/Beam Off-site Precasting																			
0250-1600.02	Bridge D3 Pier D09 Precasting Segment (7-9) - Mould S1	0	16-Nov-12 A	05-Dec-12 A	Bridge D3 Pier D09 Precasting Segment (7-9) - Mould S1														
0250-1600.03	Bridge D3 Pier D09 Precasting Segment (9-15) - Mould S1	12	06-Dec-12 A	31-Dec-12	Bridge D3 Pier D09 Precasting Segment (9-15) - Mould S1														
0250-1600.04	Bridge D3 Pier D09 Precasting Segment (16-17) - Mould S1	5	01-Jan-13	05-Jan-13	Bridge D3 Pier D09 Precasting Segment (16-17) - Mould S1														
0250-1600.06	Bridge D3 Pier D10 Precasting Segment (1-17) - Mould S1	47	06-Jan-13	21-Feb-13	Bridge D3 Pier D10 Precasting Segment (1-17) - Mould S1														
0250-1600.07	Bridge D3 Pier D11 Precasting Segment (1-17) - Mould S1	47	22-Feb-13	09-Apr-13	Bridge D3 Pier D11 Precasting Segment (1-17) - Mould S1														
0250-1650.01	Bridge D3 Pier D08 Precasting Segment (1-8) - Mould S2	29	03-Jan-13*	31-Jan-13	Bridge D3 Pier D08 Precasting Segment (1-8) - Mould S2														
0250-1650.02	Bridge D3 Pier D12 Precasting Segment (1-4) - Mould S2	18	01-Feb-13	18-Feb-13	Bridge D3 Pier D12 Precasting Segment (1-4) - Mould S2														
0250-1650.03	Bridge F1 Pier F03 Precasting Segment (1-5) - Mould S2	21	19-Feb-13	11-Mar-13	Bridge F1 Pier F03 Precasting Segment (1-5) - Mould S2														
0250-1650.04	Bridge F1 Pier F03 Precasting Segment (1-5) - Mould S2	21	12-Mar-13	01-Apr-13	Bridge F1 Pier F03 Precasting Segment (1-5) - Mould S2														

- Remaining Level of Effort
- Actual Level of Effort
- Actual Work
- Remaining Work
- Critical Remaining Work
- ◆ Milestone

Contract HY/2009/19

Three Month Rolling Programme (20 DEC 2012 to 19 MAR 2013)

3MRP

3MRP - DEC 2012 to Mar 2013

Page 1 of 6

Activity ID	Activity Name	Rem Dur	Start	Finish	2012												2013					
					December						January						February			March		
					9	26	03	10	17	24	31	07	14	21	28	04	11	18	25	04	11	18
0250-1695	Bridge Precast Beam Mould Fabrication and Assembly	0	29-Oct-12 A	13-Dec-12 A	Bridge Precast Beam Mould Fabrication and Assembly																	
0250-1700	Bridge Precast Beam Casting Bridge F4/F5 (10 nos)	42	26-Jan-13*	08-Mar-13	Bridge Precast																	
05 - SECTION 2 & 2A OF THE WORKS																						
05.1 - Cut & Cover Tunnel Ch 4855-4932 (APS Footprint)																						
05.1.1 - D-Wall Construction																						
0511-1055	D-wall Panel N47 Construction	0	09-Nov-12 A	23-Nov-12 A	D-wall Panel N47 Construction																	
0511-1052	D-wall Panel N50 Construction	7	26-Nov-12 A	28-Dec-12	D-wall Panel N50 Construction																	
0511-1053	D-wall Panel N48 Construction	12	29-Dec-12	12-Jan-13	D-wall Panel N48 Construction																	
0511-1054	D-wall Panel N49 Construction	18	15-Jan-13	04-Feb-13	D-wall Panel N49 Construction																	
0511-1065	D-wall S48-S55 Guide Wall	0	20-Sep-12 A	05-Dec-12 A	D-wall S48-S55 Guide Wall																	
0511-1072	D-wall Panel S54 Construction	4	10-Dec-12 A	24-Dec-12	D-wall Panel S54 Construction																	
0511-1073	D-wall Panel S49 Construction	18	26-Dec-12	16-Jan-13	D-wall Panel S49 Construction																	
0511-1074	D-wall Panel S53 Construction	20	17-Jan-13	08-Feb-13	D-wall Panel S53 Construction																	
0511-1076	D-wall Panel S50 Construction	15	13-Feb-13	01-Mar-13	D-wall Panel S50 Construction																	
0511-1077	D-wall Panel S51 Construction	20	04-Mar-13	26-Mar-13	D-wall Panel S51 Construction																	
05.2 - Cut & Cover Tunnel Ch 4932-5149																						
05.2.1 - D-Wall Construction																						
0521-1835.30	D-wall Panel N59 Construction	0	10-Nov-12 A	11-Dec-12 A	D-wall Panel N59 Construction																	
0521-1990.65	D-wall South Panel S68 Construction	0	09-Oct-12 A	14-Dec-12 A	D-wall South Panel S68 Construction																	
0521-1990.66	D-wall South Panel S67 Construction	15	28-Dec-12	15-Jan-13	D-wall South Panel S67 Construction																	
0521-1990.67	D-wall South Panel S65 Construction	21	17-Jan-13	13-Feb-13	D-wall South Panel S65 Construction																	
0521-1990.68	D-wall South Panel S66 Construction	15	15-Feb-13	04-Mar-13	D-wall South Panel S66 Construction																	
0521-1990.70	D-wall South Panel S61 Construction	0	01-Nov-12 A	03-Dec-12 A	D-wall South Panel S61 Construction																	
0521-1990.71	D-wall South Panel S57 Construction	0	14-Nov-12 A	08-Dec-12 A	D-wall South Panel S57 Construction																	
0521-1990.72	D-wall South Panel S58 Construction	15	18-Dec-12 A	08-Jan-13	D-wall South Panel S58 Construction																	
0521-1990.73	D-wall South Panel S59 Construction	24	09-Jan-13	05-Feb-13	D-wall South Panel S59 Construction																	
0521-1990.74	D-wall South Panel S60 Construction	24	07-Feb-13	09-Mar-13	D-wall South Panel S60 Construction																	
0521-1750.45	D-wall Panel N86 Construction	0	05-Dec-12 A	18-Dec-12 A	D-wall Panel N86 Construction																	
0521-1710.35	D-wall Panel S94 Construction	8	14-Dec-12 A	29-Dec-12	D-wall Panel S94 Construction																	
0521-1990.17	D-wall South Panel S99 Construction	18	22-Dec-12	14-Jan-13	D-wall South Panel S99 Construction																	
0521-1990.30	D-wall South Panel N92 Construction	18	02-Jan-13	22-Jan-13	D-wall South Panel N92 Construction																	
0521-1990.31	D-wall South Panel S108	0	12-Nov-12 A	05-Dec-12 A	D-wall South Panel S108																	
0521-1642	Construct Temporary End Wall (Sheet Piles) 2nd Layer	0	20-Nov-12 A	30-Nov-12 A	Construct Temporary End Wall (Sheet Piles) 2nd Layer																	
0521-1943	Construct Temporary End Wall (Sheet Piles) 3rd Layer	0	27-Nov-12 A	19-Dec-12 A	Construct Temporary End Wall (Sheet Piles) 3rd Layer																	
0521-1945	Sheet Pile + Pre-boring for Section with Obstruction	12	05-Jan-13	18-Jan-13	Sheet Pile + Pre-boring for Section with Obstruction																	
0521-1946	Grouting North Dwall and Sheetpiles Interface	9	12-Jan-13	22-Jan-13	Grouting North Dwall and Sheetpiles Interface																	
0521-2185	Grouting South Dwall and Sheetpiles Interface	9	23-Jan-13	01-Feb-13	Grouting South Dwall and Sheetpiles Interface																	
0521-2175	Pump Test C&C Tunnel East Part	18	02-Feb-13	26-Feb-13	Pump Test C&C Tunnel East Part																	
05.2.2 - Barrette Construction																						
0522-2210.69	Barrette Pile BC60	0	19-Nov-12 A	28-Nov-12 A	Barrette Pile BC60																	
0522-2215.10	Bulkhead Wall BW1	6	27-Nov-12 A	27-Dec-12	Bulkhead Wall BW1																	
05.2.3 - ELS																						
0524-2872	King Post Installation (9 nos.)	27	20-Dec-12	22-Jan-13	King Post Installation (9 nos.)																	
0524-2875	ELS Dewatering System (62 nos.)	36	03-Dec-12 A	01-Feb-13	ELS Dewatering System (62 nos.)																	

- Remaining Level of Effort
- Actual Level of Effort
- Actual Work
- Remaining Work
- Critical Remaining Work
- ◆ Milestone

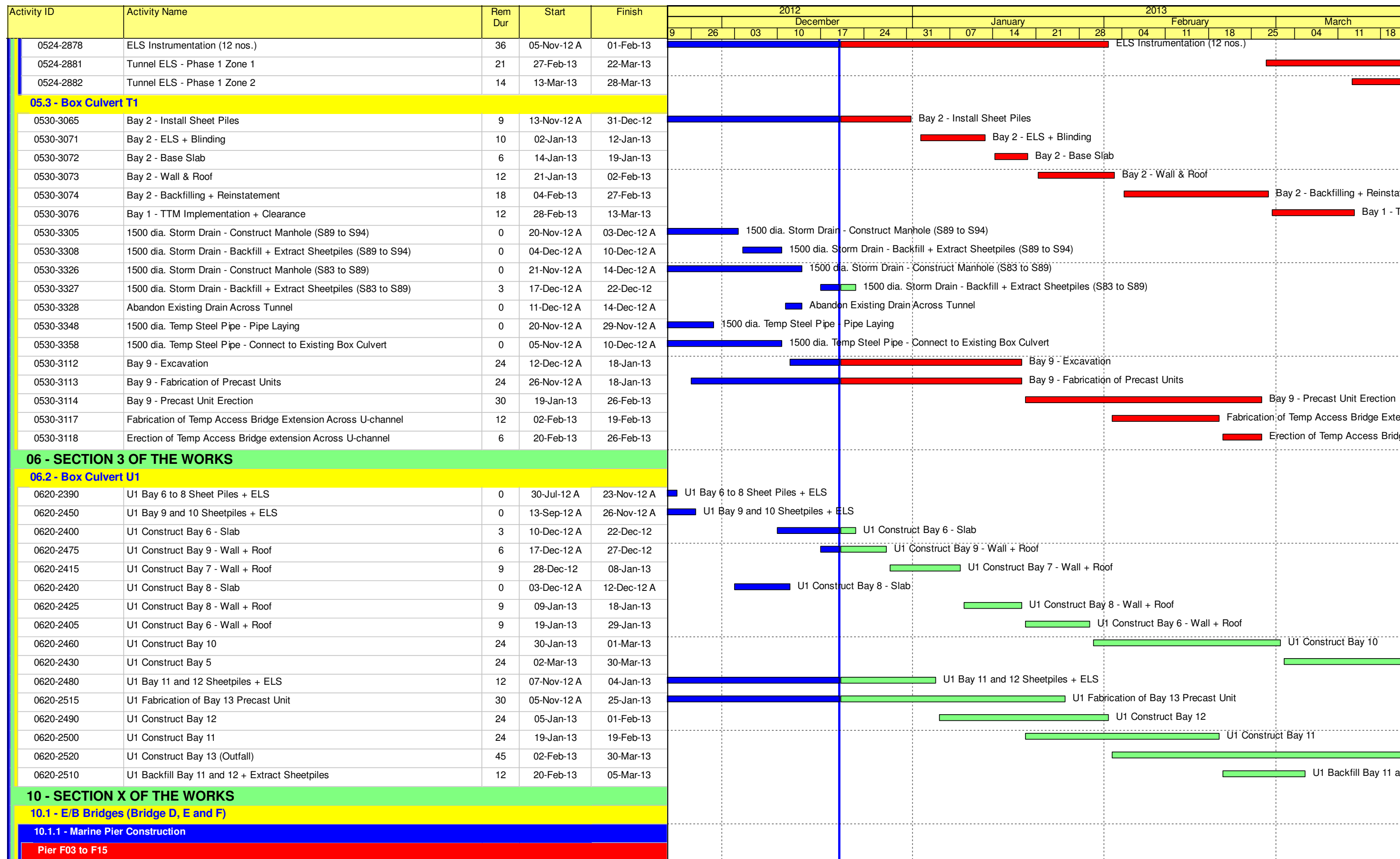
Contract HY/2009/19

Three Month Rolling Programme (20 DEC 2012 to 19 MAR 2013)

3MRP

3MRP - DEC 2012 to Mar 2013

Page 2 of 6



- █ Remaining Level of Effort
- █ Actual Level of Effort
- █ Actual Work
- █ Remaining Work
- █ Critical Remaining Work
- ◆ Milestone

Contract HY/2009/19

Three Month Rolling Programme (20 DEC 2012 to 19 MAR 2013)

3MRP

3MRP - DEC 2012 to Mar 2013

Page 3 of 6

Activity ID	Activity Name	Rem Dur	Start	Finish	2012												2013					
					December						January						February			March		
					9	26	03	10	17	24	31	07	14	21	28	04	11	18	25	04	11	18
1011-1995	Fabrication of Marine Pile Cap Cofferdam	18	04-Oct-12 A	11-Jan-13	Fabrication of Marine Pile Cap Cofferdam																	
1011-2150	F3 Pile Cap Construction	36	12-Jan-13	26-Feb-13	F3 Pile Cap Construction																	
1011-2160	F3 Pier/Column Construction	12	27-Feb-13	12-Mar-13	F3 Pier/Cc																	
1011-2170	F3 Crosshead Construction + Bearing	24	13-Mar-13	12-Apr-13																		
1011-2180	F4 Pile Cap Construction	36	12-Jan-13	26-Feb-13	F4 Pile Cap Construction																	
1011-2190	F4 Pier/Column Construction	12	27-Feb-13	12-Mar-13	F4 Pier/Cc																	
1011-2200	F4 Crosshead Construction + Bearing	24	13-Mar-13	12-Apr-13																		
1011-2010	Dismantle Piling Platform at Pier F5	0	20-Nov-12 A	30-Nov-12 A	Dismantle Piling Platform at Pier F5																	
1011-2210	F5 Pile Cap Construction	30	27-Feb-13	04-Apr-13																		
1011-1790.50	Pier F6 Dolphin Socketed H-Pile 4	0	03-Nov-12 A	05-Dec-12 A	Pier F6 Dolphin Socketed H-Pile 4																	
1011-1790.60	Pier F6 Dolphin Socketed H-Pile 6	0	03-Nov-12 A	07-Dec-12 A	Pier F6 Dolphin Socketed H-Pile 6																	
1011-2020	F6 Dismantle Piling Platform	12	28-Dec-12	11-Jan-13	F6 Dismantle Piling Platform																	
1011-2240	F6 Pile Cap Construction	30	27-Feb-13	04-Apr-13																		
1011-1910.50	Pier F7 Dolphin Socketed H-Pile 4	8	19-Nov-12 A	29-Dec-12	Pier F7 Dolphin Socketed H-Pile 4																	
1011-1910.60	Pier F7 Dolphin Socketed H-Pile 6	4	19-Nov-12 A	24-Dec-12	Pier F7 Dolphin Socketed H-Pile 6																	
1011-2030	F7 Dismantle Piling Platform	12	08-Jan-13	21-Jan-13	F7 Dismantle Piling Platform																	
1011-1862.14	Pier F8 Dolphin Socketed H-Pile 4	0	17-Oct-12 A	30-Nov-12 A	Pier F8 Dolphin Socketed H-Pile 4																	
1011-1862.15	Pier F8 Dolphin Socketed H-Pile 6	0	16-Oct-12 A	03-Dec-12 A	Pier F8 Dolphin Socketed H-Pile 6																	
1011-2040	F8 Dismantle Piling Platform	0	06-Dec-12 A	12-Dec-12 A	F8 Dismantle Piling Platform																	
1011-0802.5	Pier F9 Dolphin Socketed H-Pile P5	0	08-Oct-12 A	29-Nov-12 A	Pier F9 Dolphin Socketed H-Pile P5																	
1011-1802.1	Pier F9 Dolphin Socketed H-Pile P1	0	27-Oct-12 A	22-Nov-12 A	Pier F9 Dolphin Socketed H-Pile P1																	
1011-1802.2	Pier F9 Dolphin Socketed H-Pile P2	0	09-Oct-12 A	24-Nov-12 A	Pier F9 Dolphin Socketed H-Pile P2																	
1011-1802.3	Pier F9 Dolphin Socketed H-Pile P3	0	08-Oct-12 A	27-Nov-12 A	Pier F9 Dolphin Socketed H-Pile P3																	
1011-0802.4	Pier F9 Dolphin Socketed H-Pile P4	9	04-Dec-12 A	31-Dec-12	Pier F9 Dolphin Socketed H-Pile P4																	
1011-0802.6	Pier F9 Dolphin Socketed H-Pile P6	12	04-Dec-12 A	04-Jan-13	Pier F9 Dolphin Socketed H-Pile P6																	
1011-2050	Dismantle Piling Platform at Pier F9	18	05-Jan-13	25-Jan-13	Dismantle Piling Platform at Pier F9																	
1011-1970.1	Pier F10 Dolphin Socketed H-Pile P1	7	15-Nov-12 A	28-Dec-12	Pier F10 Dolphin Socketed H-Pile P1																	
1011-1970.2	Pier F10 Dolphin Socketed H-Pile P2	11	15-Nov-12 A	03-Jan-13	Pier F10 Dolphin Socketed H-Pile P2																	
1011-1970.3	Pier F10 Dolphin Socketed H-Pile P3	13	15-Nov-12 A	05-Jan-13	Pier F10 Dolphin Socketed H-Pile P3																	
1011-1970.4	Pier F10 Dolphin Socketed H-Pile P5	15	15-Nov-12 A	08-Jan-13	Pier F10 Dolphin Socketed H-Pile P5																	
1011-1970.5	Pier F10 Dolphin Socketed H-Pile P4	21	09-Jan-13	01-Feb-13	Pier F10 Dolphin Socketed H-Pile P4																	
1011-1970.6	Pier F10 Dolphin Socketed H-Pile P6	21	09-Jan-13	01-Feb-13	Pier F10 Dolphin Socketed H-Pile P6																	
1011-2060	Dismantle Piling Platform at Pier F10	12	13-Feb-13	26-Feb-13	Dismantle Piling Platform at P																	
1011-1770.1	Pier F11 Dolphin Socketed H-Pile P1	14	23-Nov-12 A	07-Jan-13	Pier F11 Dolphin Socketed H-Pile P1																	
1011-1770.2	Pier F11 Dolphin Socketed H-Pile P2	16	23-Nov-12 A	09-Jan-13	Pier F11 Dolphin Socketed H-Pile P2																	
1011-1770.3	Pier F11 Dolphin Socketed H-Pile P3	18	23-Nov-12 A	11-Jan-13	Pier F11 Dolphin Socketed H-Pile P3																	
1011-1770.4	Pier F11 Dolphin Socketed H-Pile P5	21	23-Nov-12 A	15-Jan-13	Pier F11 Dolphin Socketed H-Pile P5																	
1011-1770.5	Pier F11 Dolphin Socketed H-Pile P4	21	16-Jan-13	08-Feb-13	Pier F11 Dolphin Socketed H-Pile P4																	
1011-1770.6	Pier F11 Dolphin Socketed H-Pile P6	21	16-Jan-13	08-Feb-13	Pier F11 Dolphin Socketed H-Pile P6																	
1011-2070	Dismantle Piling Platform at Pier F11	12	13-Feb-13	26-Feb-13	Dismantle Piling Platform at P																	
1011-1822.1	Pier F12 Dolphin Socketed H-Pile P1	15	16-Jan-13	01-Feb-13	Pier F12 Dolphin Socketed H-Pile P1																	
1011-1822.2	Pier F12 Dolphin Socketed H-Pile P2	15	18-Jan-13	04-Feb-13	Pier F12 Dolphin Socketed H-Pile P2																	
1011-1822.3	Pier F12 Dolphin Socketed H-Pile P3	15	21-Jan-13	06-Feb-13	Pier F12 Dolphin Socketed H-Pile P3																	
1011-1822.4	Pier F12 Dolphin Socketed H-Pile P5	15	23-Jan-13	08-Feb-13	Pier F12 Dolphin Socketed H-Pile P5																	

- █ Remaining Level of Effort
- █ Actual Level of Effort
- █ Actual Work
- █ Remaining Work
- █ Critical Remaining Work
- ◆ Milestone

Contract HY/2009/19

Three Month Rolling Programme (20 DEC 2012 to 19 MAR 2013)

3MRP

3MRP - DEC 2012 to Mar 2013

Activity ID	Activity Name	Rem Dur	Start	Finish	2012							2013												
					December							January			February				March					
					9	26	03	10	17	24	31	07	14	21	28	04	11	18	25	04	11	18		
Pier Construction																								
1014-1010	Pier E1b-1 Bored Pile	18	24-Dec-12	15-Jan-13																				
1014-1220	Pier E1b-4 Bored Pile	18	16-Jan-13	05-Feb-13																				
1014-1230	Pier E1b-3 Bored Pile	30	06-Feb-13	15-Mar-13																				
10.6 - Tunnel Approach Ramp																								
10.6.1 - Approach Ramp (Excluding Portion IIB)																								
Bored Piles																								
1061-1051	Bored Pile Ramp - BN42	10	10-Dec-12 A	02-Jan-13																				
1061-1490	Bored Pile Ramp - BN40	18	03-Jan-13	23-Jan-13																				
1061-1500	Bored Pile Ramp - BN44	18	24-Jan-13	16-Feb-13																				

- Remaining Level of Effort
- Actual Level of Effort
- Actual Work
- Remaining Work
- Critical Remaining Work
- ◆ Milestone

Contract HY/2009/19

Three Month Rolling Programme (20 DEC 2012 to 19 MAR 2013)

3MRP
 3MRP - DEC 2012 to Mar 2013
 Page 6 of 6